



MINISTRY OF HUMAN RESOURCES



PERKESO



# SARAWAK QUICK FACTS

EMPLOYMENT INSURANCE SYSTEM

AS OF 6 SEPTEMBER 2024





# QUICK FACTS



## EMPLOYMENT INSURANCE SYSTEM QUICK FACTS AS OF 6 SEPTEMBER 2024

	2021	2022	2023	2024	TOTAL
Vacancy	266,591	242,245	240,529	210,046	959,411
Active Vacancies				21,532	
Jobseeker	54,536	41,956	42,530	24,907	163,929
Placement	13,336	15,443	11,568	6,102	46,449
Loss of Employment	1,982	1,065	2,410	2,051	7,508

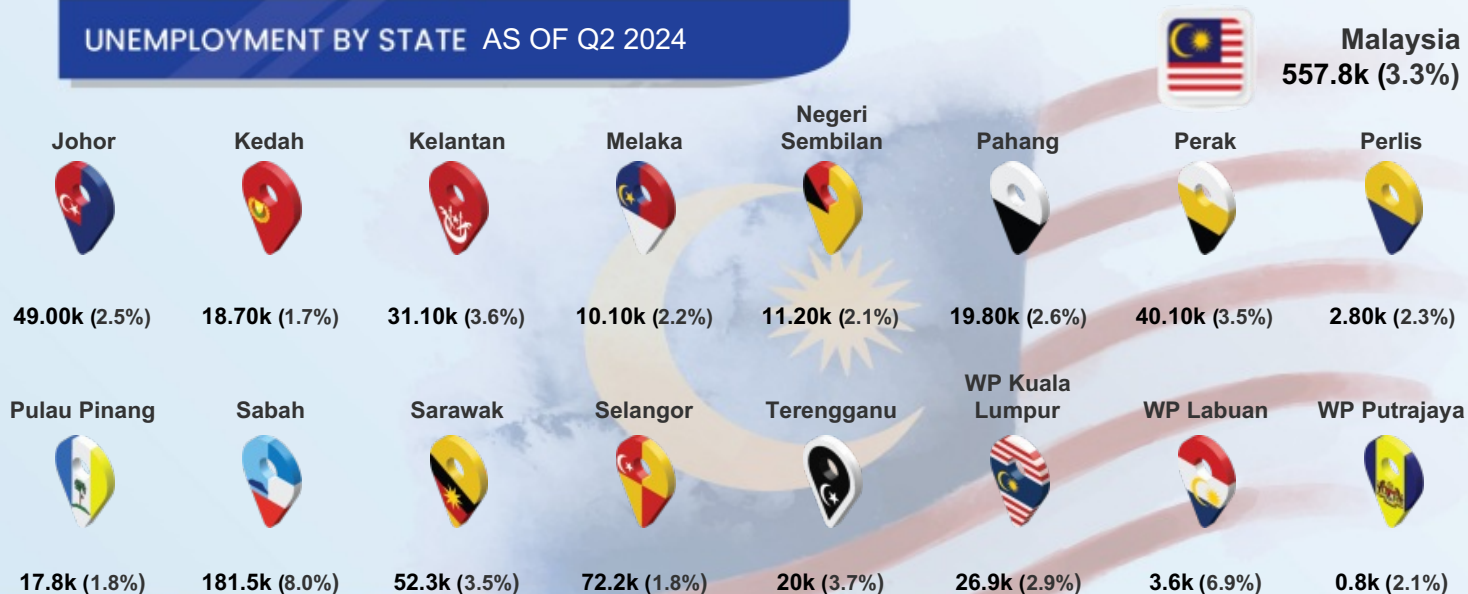
## PERKESO'S ACTIVE CONTRIBUTORS JUNE 2024

**Active Employees  
(ACT 4)**  
527,649

**Self Employment  
(ACT 789)**  
30,896

**Active Employees  
(ACT 800)**  
404,618

## UNEMPLOYMENT BY STATE AS OF Q2 2024



# QUICK FACTS



## MYFUTUREJOBS : VACANCIES

INDICATOR	2021	2022	2023	AS OF 6 SEP 2024
<b>SARAWAK</b>	<b>266,591</b>	<b>242,245</b>	<b>240,529</b>	<b>210,046</b>
<b>Johor</b>	242,847	820,368	191,623	100,032
<b>Kedah</b>	61,802	134,183	47,744	23,464
<b>Kelantan</b>	53,821	48,311	22,108	10,612
<b>Melaka</b>	62,228	156,513	45,209	24,062
<b>Negeri Sembilan</b>	86,720	181,371	62,360	26,436
<b>Pahang</b>	70,978	148,733	65,222	19,618
<b>Perak</b>	129,613	193,404	68,196	33,552
<b>Perlis</b>	10,429	5,867	4,889	2,247
<b>Pulau Pinang</b>	209,659	421,388	148,163	71,822
<b>Sabah</b>	74,450	98,434	104,003	74,344
<b>Sarawak</b>	266,591	242,245	240,529	210,046
<b>Selangor</b>	739,038	1,462,665	577,246	224,653
<b>Terengganu</b>	41,192	41,250	19,778	12,213
<b>WP Kuala Lumpur</b>	406,719	782,680	397,306	183,273
<b>WP Labuan</b>	7,511	856	832	1,243
<b>WP Putrajaya</b>	16,979	15,150	7,712	8,022
<b>STATE</b>				
<b>Primary</b>	131,023	101,101	106,797	98,273
<b>PMR/PT3</b>	36,152	36,275	37,484	25,102
<b>SPM (O-Level)</b>	74,733	78,054	70,510	63,207
<b>STPM (A-Level)</b>	3,188	3,426	3,980	5,232
<b>Diploma</b>	13,594	16,016	13,729	12,213
<b>Bachelor</b>	7,797	7,250	7,847	5,882
<b>Master</b>	84	91	142	113
<b>PhD</b>	20	32	40	24
<b>EDUCATION</b>				
<b>&lt;RM1,500</b>	181,776	60,042	15,927	6,572
<b>RM1,500-RM1,999</b>	30,455	131,442	199,835	184,980
<b>RM2,000-RM2,999</b>	10,161	15,770	14,129	9,352
<b>RM3,000-RM3,999</b>	7,967	3,651	4,713	3,206
<b>RM4,000-RM4,999</b>	1,153	1,077	1,522	1,196
<b>RM5,000-RM5,999</b>	640	716	901	770
<b>RM6,000-RM7,999</b>	1,584	1,951	2,080	2,091
<b>RM8,000-RM9,999</b>	307	296	608	682
<b>RM10,000-RM12,999</b>	242	223	490	679
<b>RM13,000-RM15,999</b>	58	88	111	258
<b>&gt;RM15,999</b>	122	369	212	260
<b>SALARY RANGE</b>				
<b>Revision Stage</b>	32,126	26,620	1	0

## MYFUTUREJOBS : VACANCIES



# QUICK FACTS

INDICATOR	2021	2022	2023	AS OF 6 SEP 2024
<b>SARAWAK</b>	<b>266,591</b>	<b>242,245</b>	<b>240,529</b>	<b>210,046</b>
<b>OCCUPATION</b>				
Managers	8,757	10,292	11,684	6,105
Professionals	15,714	14,702	13,781	10,666
Technicians	16,380	16,733	15,405	13,446
Clerical Support Workers	5,182	4,643	3,913	7,545
Service & Sales	18,682	13,765	11,968	10,506
Skilled Agriculture	1,976	1,190	2,156	1,633
Craft & Related Trades Workers	22,732	31,529	31,007	26,447
Plant & Machine Operators	17,638	13,592	9,952	9,151
Elementary Occupations	159,530	135,799	140,663	124,542
Revision Stage	0	0	0	5
<b>INDUSTRY</b>				
Agriculture, Forestry And Fishing	43,468	30,026	41,192	38,148
Mining And Quarrying	1,457	1,487	2,141	1,716
Manufacturing	64,962	48,597	51,404	38,489
Electricity, Gas, Steam	1,032	1,671	4,900	4,727
Water Supply; Sewerage & Waste	1,119	901	1,111	1,116
Construction	68,700	83,194	71,046	62,121
Wholesale And Retail	12,526	10,182	9,477	6,842
Transportation	6,865	4,586	3,964	3,779
Accommodation And F&B	25,531	19,443	14,147	13,792
ICT	1,377	933	1,891	1,326
Financial And Insurance/Takaful	1,330	1,505	2,401	821
Real Estate	3,641	2,540	5,716	3,534
Professional & Technical	8,918	8,353	6,024	8,094
Administrative And Support Service	6,856	4,636	3,789	2,379
Defence Compulsory Social Security	72	39	297	724
Education	1,662	2,169	1,476	939
Human Health And Social Work	4,195	1,737	3,094	3,955
Arts, Entertainment And Recreation	597	369	386	204
Other Service Activities	12,136	19,750	15,726	17,216
Activities Of Households	30	42	39	32
Activities Of Extraterritorial	117	85	308	92



# QUICK FACTS



## MYFUTUREJOBS : REGISTRATION OF JOBSEEKERS

INDICATOR	2021	2022	2023	AS OF 6 SEP 2024
<b>SARAWAK</b>	<b>54,536</b>	<b>41,956</b>	<b>42,530</b>	<b>24,907</b>
<b>Johor</b>	105,481	60,832	52,959	30,877
<b>Kedah</b>	53,915	35,935	40,614	26,516
<b>Kelantan</b>	42,694	27,388	29,762	20,057
<b>Melaka</b>	29,338	21,191	18,429	10,804
<b>Negeri Sembilan</b>	38,557	23,494	23,864	12,729
<b>Pahang</b>	39,888	22,108	23,387	15,484
<b>Perak</b>	64,725	39,974	38,861	24,985
<b>Perlis</b>	6,163	4,297	4,545	3,111
<b>Pulau Pinang</b>	48,890	29,004	30,836	17,059
<b>Sabah</b>	70,738	48,510	47,961	33,072
<b>Sarawak</b>	54,536	41,956	42,530	24,907
<b>Selangor</b>	213,149	122,107	108,404	53,343
<b>Terengganu</b>	32,857	20,067	20,181	14,271
<b>WP Kuala Lumpur</b>	81,668	45,279	38,977	18,654
<b>WP Labuan</b>	2,062	1,779	1,738	1,124
<b>WP Putrajaya</b>	2,859	2,051	2,994	1,402
<b>Revision Stage</b>	457	353	399	267
<b>Male</b>	26,011	21,356	20,401	12,090
<b>Female</b>	28,525	20,600	22,129	12,817
<b>&lt;15</b>	6	4	5	3
<b>15 - 19</b>	139	1,562	1,749	2,196
<b>20 - 24</b>	14,622	14,567	16,002	9,940
<b>25 - 29</b>	18,699	12,408	11,739	5,059
<b>30 - 34</b>	9,143	6,261	5,873	3,037
<b>35 - 39</b>	4,729	3,328	3,355	1,876
<b>40 - 44</b>	2,639	1,700	1,705	1,063
<b>45 - 49</b>	2,151	997	946	635
<b>50 - 54</b>	1,181	597	587	409
<b>55 - 59</b>	672	349	379	240
<b>60 - 64</b>	396	126	142	226
<b>&gt;64</b>	150	53	47	222
<b>Revision Stage</b>	9	4	1	1



STATE





AGE GROUP

## MYFUTUREJOBS : REGISTRATION OF JOBSEEKERS



# QUICK FACTS

INDICATOR		2021	2022	2023	AS OF 6 SEP 2024
	SARAWAK	54,536	41,956	42,530	24,907
 <b>EDUCATION</b>	Primary	1,022	615	652	686
	PMR/PT3	1,898	1,185	1,022	671
	SPM (O-Level)	16,228	10,061	11,500	6,226
	STPM (A-Level)	2,039	1,647	1,380	1,142
	Diploma	7,659	6,576	7,480	3,415
	Bachelor	7,639	6,148	6,250	3,151
	Master	607	413	347	166
	PhD	30	20	26	15
	Revision Stage	17,414	15,291	13,873	9,435
 <b>OKU</b>	Total	173	146	279	224
	Hearing impairment	9	5	14	19
	Learning disability	19	10	21	26
	Mental disability	38	29	40	40
	Multiple disability	2	1	16	12
	Physical disability	84	93	156	108
	Speech impairment	1	1	10	2
	Visual impairment	20	7	22	17

# QUICK FACTS



## MYFUTUREJOBS : PLACEMENT

INDICATOR	2021	2022	2023	AS OF 30 AUG 2024
<b>SARAWAK</b>	<b>13,336</b>	<b>15,443</b>	<b>11,568</b>	<b>6,102</b>
<b>STATE</b>				
Johor	39,725	33,037	19,853	12,792
Kedah	11,963	11,416	8,896	6,914
Kelantan	5,336	17,834	3,439	2,809
Melaka	9,084	8,104	6,314	4,167
Negeri Sembilan	9,095	7,226	6,834	3,855
Pahang	7,942	6,524	5,739	3,730
Perak	17,437	15,917	9,108	5,836
Perlis	1,126	1,047	910	705
Pulau Pinang	29,385	21,588	18,028	9,618
Sabah	6,977	19,297	11,957	5,987
Sarawak	13,336	15,443	11,568	6,102
Selangor	80,122	57,128	54,846	25,359
Terengganu	8,414	5,427	4,366	2,869
WP Kuala Lumpur	64,750	67,439	37,832	16,251
WP Labuan	452	687	598	302
WP Putrajaya	15,720	5,930	987	2,501
Revision Stage	0	0	13,639	9,568
<b>GENDER</b>				
Male	7,746	8,816	6,280	3,244
Female	5,590	6,627	5,288	2,858
<b>OKU</b>				
Total Disabled Person	68	225	107	73
<b>AGE GROUP</b>				
<15	1	0	0	0
15 - 19	1,367	933	375	114
20 - 24	3,890	5,178	3,861	2,173
25 - 29	2,620	4,053	3,710	1,357
30 - 34	1,646	1,822	1,644	644
35 - 39	1,102	1,184	845	678
40 - 44	975	792	491	374
45 - 49	810	607	290	257
50 - 54	484	499	203	192
55 - 59	306	287	106	88
60 - 64	98	52	43	116
>64	37	36	0	109
<b>EDUCATION</b>				
Primary	448	590	219	240
PMR/PT3	912	1,143	432	245
SPM (O-Level)	5,763	6,299	3,903	2,265
STPM (A-Level)	614	779	451	265
Diploma	1,714	3,412	2,211	1,193
Bachelor	1,481	2,382	1,836	1,012
Master	85	104	124	55
PhD	6	1	6	3
Revision Stage	2,313	733	2,386	824



## MYFUTUREJOBS : PLACEMENT

INDICATOR	2021	2022	2023	AS OF 30 AUG 2024
<b>SARAWAK</b>	<b>13,336</b>	<b>15,443</b>	<b>11,568</b>	<b>6,102</b>
<b>SALARY RANGE</b>				
<RM1,500	3,524	1,781	1,952	723
RM1,500-RM1,999	4,933	4,826	5,124	3,190
RM2,000-RM2,999	1,506	1,361	2,921	1,030
RM3,000-RM3,999	636	367	797	332
RM4,000-RM4,999	225	424	312	193
RM5,000-RM5,999	115	68	263	107
RM6,000-RM7,999	102	57	17	30
RM8,000-RM9,999	81	42	7	21
RM10,000-RM12,999	55	73	7	5
RM13,000-RM15,999	9	5	2	5
>RM15,999	11	2	5	6
Revision Stage	2,139	6,437	161	460
<b>OCCUPATION</b>				
Managers	438	402	373	213
Professionals	1,532	1,451	1,665	831
Technicians	2,232	2,652	2,250	715
Clerical Support Workers	852	1,138	784	1,310
Service and Sales	3,894	3,184	2,373	698
Skilled Agriculture	65	47	279	9
Craft and related Trades Workers	568	367	436	302
Plant and Machine Operators	983	643	753	296
Elementary Occupations	1,822	1,984	1,849	690
Revision Stage	950	3,575	806	1,038
<b>INDUSTRY</b>				
Agriculture, Forestry And Fishing	451	258	305	182
Mining & Quarrying	42	178	97	104
Manufacturing	1,197	3,741	2,469	535
Electricity, Gas, Steam	168	82	85	22
Water Supply, Sewerage & Waste	82	34	48	31
Construction	1,538	967	1,253	744
Wholesale And Retail	1,579	1,942	1,988	936
Transportation	1,085	910	444	171
Accommodation And F&B	1,378	1,350	1,003	388
ICT	1,427	119	136	54
Financial And Insurance/Takaful	92	126	190	58
Real Estate	53	65	74	32
Professional & Technical	528	403	918	345
Administrative And Support Service	286	485	330	138
Defence Compulsory Social Security	372	258	431	1,067
Education	215	360	315	189
Human Health And Social Work	305	194	310	146
Arts, Entertainment And Recreation	63	35	40	13
Other Service Activities	1,903	899	845	384
Activities Of Households	119	45	47	22
Activities Of Extraterritorial	2	13	21	15
Revision Stage	451	2,979	219	526



# QUICK FACTS



## LOSS OF EMPLOYMENT

INDICATOR	2021	2022	2023	AS OF 6 SEP 2024
<b>SARAWAK</b>	<b>1,982</b>	<b>1,065</b>	<b>2,410</b>	<b>2,051</b>
Johor	5,145	3,199	5,099	3,151
Kedah	2,932	1,189	1,750	1,876
Kelantan	374	666	560	463
Melaka	987	543	1,806	695
Negeri Sembilan	1,079	632	1,432	886
Pahang	861	659	1,066	559
Perak	2,675	1,664	1,647	1,378
Perlis	146	40	140	190
Pulau Pinang	3,529	2,112	5,844	5,743
Sabah	2,934	1,299	1,420	695
<b>Sarawak</b>	<b>1,982</b>	<b>1,065</b>	<b>2,410</b>	<b>2,051</b>
Selangor	21,198	10,546	14,763	10,392
Terengganu	704	817	502	505
WP Kuala Lumpur	16,488	9,766	11,116	8,432
WP Labuan	220	110	123	85
WP Putrajaya	106	75	304	79
Revision Stage	0	6	0	18
<b>STATE</b>				
Male	1,160	684	1,611	1,334
Female	822	381	799	717
<b>GENDER</b>				
Primary	136	77	441	296
PMR/PT3	200	139	260	140
SPM (O-Level)	835	459	1,102	863
STPM (A-Level)	66	30	73	76
Diploma	323	149	334	455
Bachelor	232	112	184	202
Master	28	12	15	18
PhD	0	0	1	1
Revision Stage	162	87	0	0
<b>EDUCATION</b>				
<RM1,500	733	366	414	139
RM1,500-RM1,999	316	203	659	347
RM2,000-RM2,999	377	231	597	990
RM3,000-RM3,999	206	107	344	276
RM4,000-RM4,999	113	48	131	118
RM5,000-RM5,999	59	29	83	68
RM6,000-RM7,999	52	33	73	43
RM8,000-RM9,999	33	11	26	20
RM10,000-RM12,999	20	9	21	13
RM13,000-RM15,999	16	1	10	5
>RM15,999	21	8	14	10
Revision Stage	36	19	38	22
<b>SALARY RANGE</b>				



## LOSS OF EMPLOYMENT

INDICATOR	2021	2022	2023	AS OF 6 SEP 2024
<b>SARAWAK</b>	<b>1,982</b>	<b>1,065</b>	<b>2,410</b>	<b>2,051</b>
<b>OCCUPATION</b>				
Managers	238	108	157	113
Professionals	330	121	269	231
Technicians	319	153	401	245
Clerical Support Workers	230	127	151	95
Service and Sales	176	103	258	94
Skilled Agriculture	17	6	30	14
Craft & Related Trades Workers	88	44	117	94
Plant and Machine Operators	156	177	381	804
Elementary Occupations	387	217	594	231
Revision Stage	41	9	52	130
<b>INDUSTRY</b>				
Agriculture, Forestry And Fishing	178	128	220	18
Mining And Quarrying	51	8	69	3
Manufacturing	251	118	371	958
Electricity, Gas, Steam	7	1	4	5
Water Supply, Sewerage & Waste	6	1	2	4
Construction	244	161	335	557
Wholesale & Retail	366	309	870	193
Transportation	55	53	101	27
Accommodation And F&B	225	28	67	39
ICT	46	16	48	15
Financial And Insurance/Takaful	22	13	38	28
Real Estate	44	19	12	5
Professional & Technical	196	79	138	61
Administrative And Support Service	111	33	26	67
Defence Compulsory Social Security	1	9	21	7
Education	62	39	9	10
Human Health And Social Work	15	9	12	20
Arts, Entertainment And Recreation	12	2	3	8
Other Service Activities	82	38	61	25
Activities Of Households	0	1	1	1
Activities Of Extraterritorial	8	0	2	0
<b>REASON FOR LOSS OF EMPLOYMENT</b>				
Closure of Business / Division	465	257	697	296
Downsizing	391	143	598	374
Financial Difficulties	178	83	180	70
Performance-Based Dismissal	272	169	157	105
Voluntary Resignation	178	187	208	116
VSS / MSS / Early Retirement Package	117	44	182	769
Other Reasons	381	182	388	321