



MINISTRY OF HUMAN RESOURCES



PERKESO



PULAU PINANG

# QUICK FACTS

EMPLOYMENT INSURANCE SYSTEM

AS OF 6 SEPTEMBER 2024







MINISTRY OF HUMAN RESOURCES



EMPLOYMENT INSURANCE SYSTEM

# QUICK FACTS



## EMPLOYMENT INSURANCE SYSTEM QUICK FACTS AS OF 6 SEPTEMBER 2024

	2021	2022	2023	2024	TOTAL
Vacancy	209,659	421,388	148,163	71,822	851,032
Active Vacancies				8,101	
Jobseeker	48,890	29,004	30,836	17,059	125,789
Placement	29,385	21,588	18,028	9,618	78,619
Loss of Employment	3,529	2,112	5,844	5,743	17,228

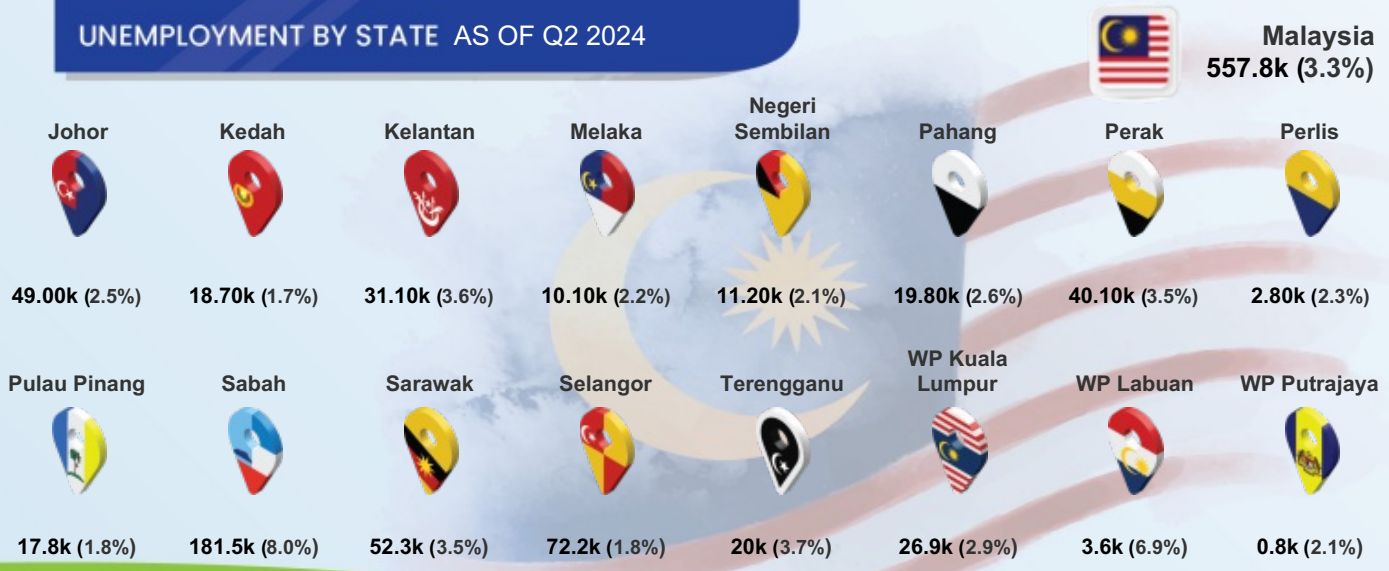
## PERKESO'S ACTIVE CONTRIBUTORS JUNE 2024

**Active Employees (ACT 4)**  
641,950

**Self Employment (ACT 789)**  
18,910

**Active Employees (ACT 800)**  
442,011

## UNEMPLOYMENT BY STATE AS OF Q2 2024



Notes: (%) show unemployment rates

# QUICK FACTS



## MYFUTUREJOBS : VACANCIES

INDICATOR	2021	2022	2023	AS OF 6 SEP 2024
<b>PULAU PINANG</b>	<b>209,659</b>	<b>421,388</b>	<b>148,163</b>	<b>71,822</b>
<b>Johor</b>	242,847	820,368	191,623	100,032
<b>Kedah</b>	61,802	134,183	47,744	23,464
<b>Kelantan</b>	53,821	48,311	22,108	10,612
<b>Melaka</b>	62,228	156,513	45,209	24,062
<b>Negeri Sembilan</b>	86,720	181,371	62,360	26,436
<b>Pahang</b>	70,978	148,733	65,222	19,618
<b>Perak</b>	129,613	193,404	68,196	33,552
<b>Perlis</b>	10,429	5,867	4,889	2,247
<b>Pulau Pinang</b>	209,659	421,388	148,163	71,822
<b>Sabah</b>	74,450	98,434	104,003	74,344
<b>Sarawak</b>	266,591	242,245	240,529	210,046
<b>Selangor</b>	739,038	1,462,665	577,246	224,653
<b>Terengganu</b>	41,192	41,250	19,778	12,213
<b>WP Kuala Lumpur</b>	406,719	782,680	397,306	183,273
<b>WP Labuan</b>	7,511	856	832	1,243
<b>WP Putrajaya</b>	16,979	15,150	7,712	8,022
<b>STATE</b>				
<b>EDUCATION</b>				
<b>Primary</b>	16,897	55,978	12,416	1,026
<b>PMR/PT3</b>	33,549	102,906	14,188	6,091
<b>SPM (O-Level)</b>	106,807	209,999	64,956	26,930
<b>STPM (A-Level)</b>	1,995	4,815	1,244	559
<b>Diploma</b>	29,412	28,806	26,561	19,441
<b>Bachelor</b>	20,665	18,666	28,558	17,496
<b>Master</b>	249	166	207	233
<b>PhD</b>	85	52	33	46
<b>SALARY RANGE</b>				
<b>&lt;RM1,500</b>	79,254	138,804	8,632	2,953
<b>RM1,500-RM1,999</b>	58,678	177,045	74,722	23,197
<b>RM2,000-RM2,999</b>	31,014	46,956	29,075	18,908
<b>RM3,000-RM3,999</b>	13,818	9,189	13,679	8,401
<b>RM4,000-RM4,999</b>	1,772	2,145	12,151	7,485
<b>RM5,000-RM5,999</b>	2,483	2,280	5,387	4,009
<b>RM6,000-RM7,999</b>	1,470	4,279	1,404	2,584
<b>RM8,000-RM9,999</b>	891	1,228	1,215	1,501
<b>RM10,000-RM12,999</b>	670	745	1,385	2,317
<b>RM13,000-RM15,999</b>	201	411	259	342
<b>&gt;RM15,999</b>	75	513	250	125
<b>Revision Stage</b>	19,333	37,793	4	0



# QUICK FACTS

## MYFUTUREJOBS : VACANCIES

INDICATOR	2021	2022	2023	AS OF 6 SEP 2024
<b>PULAU PINANG</b>	<b>209,659</b>	<b>421,388</b>	<b>148,163</b>	<b>71,822</b>
<b>OCCUPATION</b>				
Managers	5,585	11,281	12,113	6,647
Professionals	30,995	25,340	26,557	14,671
Technicians	27,124	25,234	16,957	10,340
Clerical Support Workers	14,629	14,028	11,421	14,281
Service & Sales	18,770	31,279	18,943	9,169
Skilled Agriculture	64	429	127	12
Craft & Related Trades Workers	14,973	30,464	6,456	2,042
Plant & Machine Operators	30,807	60,434	7,346	3,731
Elementary Occupations	66,712	222,899	48,243	10,929
<b>INDUSTRY</b>				
Agriculture, Forestry And Fishing	178	1,768	303	118
Mining And Quarrying	200	341	9	2
Manufacturing	106,508	246,671	49,147	18,956
Electricity, Gas, Steam	476	929	495	252
Water Supply; Sewerage & Waste	3,263	5,600	1,576	338
Construction	3,583	46,028	18,236	3,998
Wholesale And Retail	11,817	20,867	14,372	5,518
Transportation	8,791	3,323	2,382	3,376
Accommodation And F&B	22,333	24,683	13,859	3,998
ICT	5,329	7,285	6,060	16,662
Financial And Insurance/Takaful	1,764	2,850	5,327	1,839
Real Estate	266	271	158	190
Professional & Technical	8,656	11,829	11,632	3,141
Administrative And Support Service	20,035	25,312	13,479	6,747
Defence Compulsory Social Security	544	1,201	526	826
Education	3,440	3,438	1,888	1,361
Human Health And Social Work	3,838	3,339	4,092	3,410
Arts, Entertainment And Recreation	301	612	209	147
Other Service Activities	6,390	14,114	4,221	886
Activities Of Households	1,947	925	166	16
Activities Of Extraterritorial	0	2	26	41

# QUICK FACTS



## MYFUTUREJOBS : REGISTRATION OF JOBSEKERS

INDICATOR	2021	2022	2023	AS OF 6 SEP 2024
PULAU PINANG	48,890	29,004	30,836	17,059
Johor	105,481	60,832	52,959	30,877
Kedah	53,915	35,935	40,614	26,516
Kelantan	42,694	27,388	29,762	20,057
Melaka	29,338	21,191	18,429	10,804
Negeri Sembilan	38,557	23,494	23,864	12,729
Pahang	39,888	22,108	23,387	15,484
Perak	64,725	39,974	38,861	24,985
Perlis	6,163	4,297	4,545	3,111
Pulau Pinang	48,890	29,004	30,836	17,059
Sabah	70,738	48,510	47,961	33,072
Sarawak	54,536	41,956	42,530	24,907
Selangor	213,149	122,107	108,404	53,343
Terengganu	32,857	20,067	20,181	14,271
WP Kuala Lumpur	81,668	45,279	38,977	18,654
WP Labuan	2,062	1,779	1,738	1,124
WP Putrajaya	2,859	2,051	2,994	1,402
Revision Stage	457	353	399	267



### STATE

GENDER	2021	2022	2023	AS OF 6 SEP 2024
Male	24,140	14,162	15,294	8,929
Female	24,750	14,842	15,542	8,130



### AGE GROUP

AGE GROUP	2021	2022	2023	AS OF 6 SEP 2024
<15	2	2	3	3
15 - 19	101	773	1,041	1,106
20 - 24	11,527	8,649	10,013	5,566
25 - 29	15,476	8,608	8,475	3,299
30 - 34	7,350	4,406	4,338	2,103
35 - 39	4,248	2,507	2,572	1,321
40 - 44	3,216	1,562	1,630	1,005
45 - 49	2,553	1,051	1,086	852
50 - 54	1,950	700	843	679
55 - 59	1,313	414	566	412
60 - 64	747	225	194	339
>64	400	101	75	374
Revision Stage	7	6	0	0



## MYFUTUREJOBS : REGISTRATION OF JOBSEEKERS



# QUICK FACTS

INDICATOR	2021	2022	2023	AS OF 6 SEP 2024
<b>PULAU PINANG</b>	<b>48,890</b>	<b>29,004</b>	<b>30,836</b>	<b>17,059</b>
<b>EDUCATION</b>				
Primary	530	394	274	489
PMR/PT3	1,306	463	703	369
SPM (O-Level)	17,461	6,997	7,978	4,377
STPM (A-Level)	1,134	527	606	349
Diploma	6,659	4,698	4,904	2,631
Bachelor	8,667	5,200	5,553	2,816
Master	776	390	461	262
PhD	78	59	48	37
Revision Stage	12,279	10,276	10,309	5,729
<b>OKU</b>				
Total	170	145	299	258
Hearing impairment	58	21	29	21
Learning disability	17	20	49	20
Mental disability	18	37	59	34
Multiple disability	6	3	15	9
Physical disability	61	59	119	148
Speech impairment	3	2	11	6
Visual impairment	7	3	17	20

# QUICK FACTS



## MYFUTUREJOBS : PLACEMENT

INDICATOR	2021	2022	2023	AS OF 30 AUG 2024
<b>PULAU PINANG</b>	<b>29,385</b>	<b>21,588</b>	<b>18,028</b>	<b>9,618</b>
<b>STATE</b>				
Johor	39,725	33,037	19,853	12,792
Kedah	11,963	11,416	8,896	6,914
Kelantan	5,336	17,834	3,439	2,809
Melaka	9,084	8,104	6,314	4,167
Negeri Sembilan	9,095	7,226	6,834	3,855
Pahang	7,942	6,524	5,739	3,730
Perak	17,437	15,917	9,108	5,836
Perlis	1,126	1,047	910	705
Pulau Pinang	29,385	21,588	18,028	9,618
Sabah	6,977	19,297	11,957	5,987
Sarawak	13,336	15,443	11,568	6,102
Selangor	80,122	57,128	54,846	25,359
Terengganu	8,414	5,427	4,366	2,869
WP Kuala Lumpur	64,750	67,439	37,832	16,251
WP Labuan	452	687	598	302
WP Putrajaya	15,720	5,930	987	2,501
Revision Stage	0	0	13,639	9,568
<b>GENDER</b>				
Male	17,125	11,529	9,597	5,078
Female	12,260	10,059	8,431	4,540
<b>OKU</b>				
Total Disabled Person	233	337	213	108
<b>AGE GROUP</b>				
<15	0	0	0	1
15 - 19	2,935	1,643	641	285
20 - 24	10,147	7,008	5,761	3,174
25 - 29	6,017	5,131	5,833	2,325
30 - 34	2,854	2,169	2,269	1,004
35 - 39	2,021	1,504	1,229	846
40 - 44	1,763	1,282	858	576
45 - 49	1,416	1,164	598	486
50 - 54	986	919	444	304
55 - 59	736	561	255	170
60 - 64	329	143	140	225
>64	181	64	0	222
<b>EDUCATION</b>				
Primary	446	358	448	312
PMR/PT3	1,021	605	442	266
SPM (O-Level)	11,217	7,283	6,817	3,842
STPM (A-Level)	791	449	319	200
Diploma	3,966	4,605	3,199	1,617
Bachelor	4,339	4,505	3,568	1,848
Master	302	227	253	162
PhD	17	15	26	8
Revision Stage	7,286	3,541	2,956	1,363



# QUICK FACTS

## MYFUTUREJOBS : PLACEMENT

INDICATOR	2021	2022	2023	AS OF 30 AUG 2024
<b>PULAU PINANG</b>	<b>29,385</b>	<b>21,588</b>	<b>18,028</b>	<b>9,618</b>
<RM1,500	3,989	2,032	2,124	744
RM1,500-RM1,999	13,833	7,123	7,252	3,901
RM2,000-RM2,999	5,798	4,978	4,923	2,111
RM3,000-RM3,999	2,051	1,368	1,696	841
RM4,000-RM4,999	865	1,073	697	299
RM5,000-RM5,999	451	290	606	155
RM6,000-RM7,999	388	132	87	81
RM8,000-RM9,999	185	85	47	49
RM10,000-RM12,999	148	29	50	38
RM13,000-RM15,999	40	7	28	25
>RM15,999	44	14	29	29
Revision Stage	1,593	4,457	489	1,345
<b>Managers</b>	<b>1,444</b>	<b>551</b>	<b>890</b>	<b>329</b>
<b>Professionals</b>	<b>4,316</b>	<b>2,830</b>	<b>2,703</b>	<b>1,748</b>
<b>Technicians</b>	<b>4,669</b>	<b>5,332</b>	<b>3,581</b>	<b>1,290</b>
<b>Clerical Support Workers</b>	<b>2,345</b>	<b>1,087</b>	<b>1,013</b>	<b>1,123</b>
<b>Service and Sales</b>	<b>4,199</b>	<b>2,408</b>	<b>3,020</b>	<b>721</b>
<b>Skilled Agriculture</b>	<b>143</b>	<b>6</b>	<b>75</b>	<b>7</b>
<b>Craft and related Trades Workers</b>	<b>828</b>	<b>399</b>	<b>478</b>	<b>223</b>
<b>Plant and Machine Operators</b>	<b>5,464</b>	<b>3,686</b>	<b>2,321</b>	<b>2,421</b>
<b>Elementary Occupations</b>	<b>3,275</b>	<b>426</b>	<b>2,343</b>	<b>684</b>
Revision Stage	2,702	4,863	1,604	1,072
<b>Agriculture, Forestry And Fishing</b>	<b>61</b>	<b>100</b>	<b>26</b>	<b>15</b>
<b>Mining &amp; Quarrying</b>	<b>7</b>	<b>7</b>	<b>13</b>	<b>5</b>
<b>Manufacturing</b>	<b>10,008</b>	<b>8,421</b>	<b>6,545</b>	<b>3,912</b>
<b>Electricity, Gas, Steam</b>	<b>171</b>	<b>67</b>	<b>117</b>	<b>20</b>
<b>Water Supply, Sewerage &amp; Waste</b>	<b>61</b>	<b>12</b>	<b>117</b>	<b>24</b>
<b>Construction</b>	<b>585</b>	<b>347</b>	<b>569</b>	<b>267</b>
<b>Wholesale And Retail</b>	<b>1,698</b>	<b>1,011</b>	<b>1,749</b>	<b>654</b>
<b>Transportation</b>	<b>1,355</b>	<b>1,006</b>	<b>648</b>	<b>343</b>
<b>Accommodation And F&amp;B</b>	<b>1,844</b>	<b>975</b>	<b>1,568</b>	<b>598</b>
<b>ICT</b>	<b>1,007</b>	<b>256</b>	<b>293</b>	<b>262</b>
<b>Financial And Insurance/Takaful</b>	<b>148</b>	<b>303</b>	<b>183</b>	<b>190</b>
<b>Real Estate</b>	<b>135</b>	<b>49</b>	<b>116</b>	<b>57</b>
<b>Professional &amp; Technical</b>	<b>2,360</b>	<b>1,690</b>	<b>1,159</b>	<b>325</b>
<b>Administrative And Support Service</b>	<b>3,333</b>	<b>1,614</b>	<b>1,152</b>	<b>365</b>
<b>Defence Compulsory Social Security</b>	<b>418</b>	<b>230</b>	<b>328</b>	<b>809</b>
<b>Education</b>	<b>439</b>	<b>277</b>	<b>326</b>	<b>144</b>
<b>Human Health And Social Work</b>	<b>485</b>	<b>292</b>	<b>512</b>	<b>211</b>
<b>Arts, Entertainment And Recreation</b>	<b>138</b>	<b>76</b>	<b>78</b>	<b>13</b>
<b>Other Service Activities</b>	<b>2,968</b>	<b>1,640</b>	<b>2,001</b>	<b>497</b>
<b>Activities Of Households</b>	<b>196</b>	<b>98</b>	<b>29</b>	<b>18</b>
<b>Activities Of Extraterritorial</b>	<b>71</b>	<b>98</b>	<b>12</b>	<b>8</b>
Revision Stage	1,897	3,019	487	881



### SALARY RANGE



### OCCUPATION



### INDUSTRY



# QUICK FACTS



## LOSS OF EMPLOYMENT

INDICATOR	2021	2022	2023	AS OF 6 SEP 2024
<b>PULAU PINANG</b>	<b>3,529</b>	<b>2,112</b>	<b>5,844</b>	<b>5,743</b>
<b>Johor</b>	5,145	3,199	5,099	3,151
<b>Kedah</b>	2,932	1,189	1,750	1,876
<b>Kelantan</b>	374	666	560	463
<b>Melaka</b>	987	543	1,806	695
<b>Negeri Sembilan</b>	1,079	632	1,432	886
<b>Pahang</b>	861	659	1,066	559
<b>Perak</b>	2,675	1,664	1,647	1,378
<b>Perlis</b>	146	40	140	190
<b>Pulau Pinang</b>	3,529	2,112	5,844	5,743
<b>Sabah</b>	2,934	1,299	1,420	695
<b>Sarawak</b>	1,982	1,065	2,410	2,051
<b>Selangor</b>	21,198	10,546	14,763	10,392
<b>Terengganu</b>	704	817	502	505
<b>WP Kuala Lumpur</b>	16,488	9,766	11,116	8,432
<b>WP Labuan</b>	220	110	123	85
<b>WP Putrajaya</b>	106	75	304	79
<b>Revision Stage</b>	0	6	0	18
<b>STATE</b>				
<b>Male</b>	1,762	1,230	3,002	3,588
<b>Female</b>	1,767	882	2,842	2,155
<b>GENDER</b>				
<b>Primary</b>	95	50	252	258
<b>PMR/PT3</b>	286	127	337	270
<b>SPM (O-Level)</b>	1,402	799	2,347	2,649
<b>STPM (A-Level)</b>	101	83	164	91
<b>Diploma</b>	819	576	1,455	1,494
<b>Bachelor</b>	610	363	1,095	900
<b>Master</b>	95	50	179	74
<b>PhD</b>	6	1	15	7
<b>Revision Stage</b>	115	63	0	0
<b>EDUCATION</b>				
<b>&lt;RM1,500</b>	691	177	417	180
<b>RM1,500-RM1,999</b>	627	383	1,243	554
<b>RM2,000-RM2,999</b>	848	662	1,790	1,983
<b>RM3,000-RM3,999</b>	515	379	761	1,204
<b>RM4,000-RM4,999</b>	290	171	416	631
<b>RM5,000-RM5,999</b>	150	99	280	410
<b>RM6,000-RM7,999</b>	149	77	285	253
<b>RM8,000-RM9,999</b>	77	53	130	96
<b>RM10,000-RM12,999</b>	59	33	201	90
<b>RM13,000-RM15,999</b>	28	22	95	55
<b>&gt;RM15,999</b>	57	42	180	118
<b>Revision Stage</b>	38	14	46	169
<b>SALARY RANGE</b>				



# QUICK FACTS

## LOSS OF EMPLOYMENT

INDICATOR	2021	2022	2023	AS OF 6 SEP 2024
	PULAU PINANG	3,529	2,112	5,844
<b>OCCUPATION</b>				
Managers	448	235	545	259
Professionals	910	397	1,169	864
Technicians	728	556	1,181	1,204
Clerical Support Workers	324	135	248	137
Service and Sales	290	73	92	99
Skilled Agriculture	1	0	1	1
Craft & Related Trades Workers	31	50	94	74
Plant and Machine Operators	593	608	2,317	2,505
Elementary Occupations	196	52	182	588
Revision Stage	8	6	15	12
<b>INDUSTRY</b>				
Agriculture, Forestry And Fishing	20	3	6	10
Mining And Quarrying	28	0	2	1
Manufacturing	1,168	1,232	3,599	3,762
Electricity, Gas, Steam	3	2	1	0
Water Supply, Sewerage & Waste	4	4	8	6
Construction	137	36	155	87
Wholesale & Retail	553	267	423	230
Transportation	95	86	218	174
Accommodation And F&B	303	26	61	418
ICT	96	195	344	139
Financial And Insurance/Takaful	38	18	26	71
Real Estate	341	14	33	11
Professional & Technical	241	95	260	346
Administrative And Support Service	223	37	295	324
Defence Compulsory Social Security	2	22	53	5
Education	52	6	15	20
Human Health And Social Work	38	9	163	36
Arts, Entertainment And Recreation	95	2	0	9
Other Service Activities	91	52	150	94
Activities Of Households	0	6	21	0
Activities Of Extraterritorial	1	0	11	0
<b>REASON FOR LOSS OF EMPLOYMENT</b>				
Closure of Business / Division	1,043	402	772	1,707
Downsizing	289	416	784	1,446
Financial Difficulties	199	73	185	165
Performance-Based Dismissal	615	207	334	218
Voluntary Resignation	281	109	173	121
VSS / MSS / Early Retirement Package	594	763	3,017	1,757
Other Reasons	508	142	579	329