



MINISTRY OF HUMAN RESOURCES



PERKESO



KEDAH

# QUICK FACTS

EMPLOYMENT INSURANCE SYSTEM

AS OF 6 DECEMBER 2024





MINISTRY OF HUMAN RESOURCES



EMPLOYMENT INSURANCE SYSTEM

# QUICK FACTS

## EMPLOYMENT INSURANCE SYSTEM QUICK FACTS AS OF 6 DECEMBER 2024

	2021	2022	2023	2024	TOTAL
Vacancy	61,802	134,183	47,744	31,787	275,516
Active Vacancies				2,066	
Jobseeker	53,915	35,935	40,614	34,212	164,676
Placement	11,963	11,416	8,896	9,173	41,448
Loss of Employment	2,932	1,189	1,750	2,567	8,438

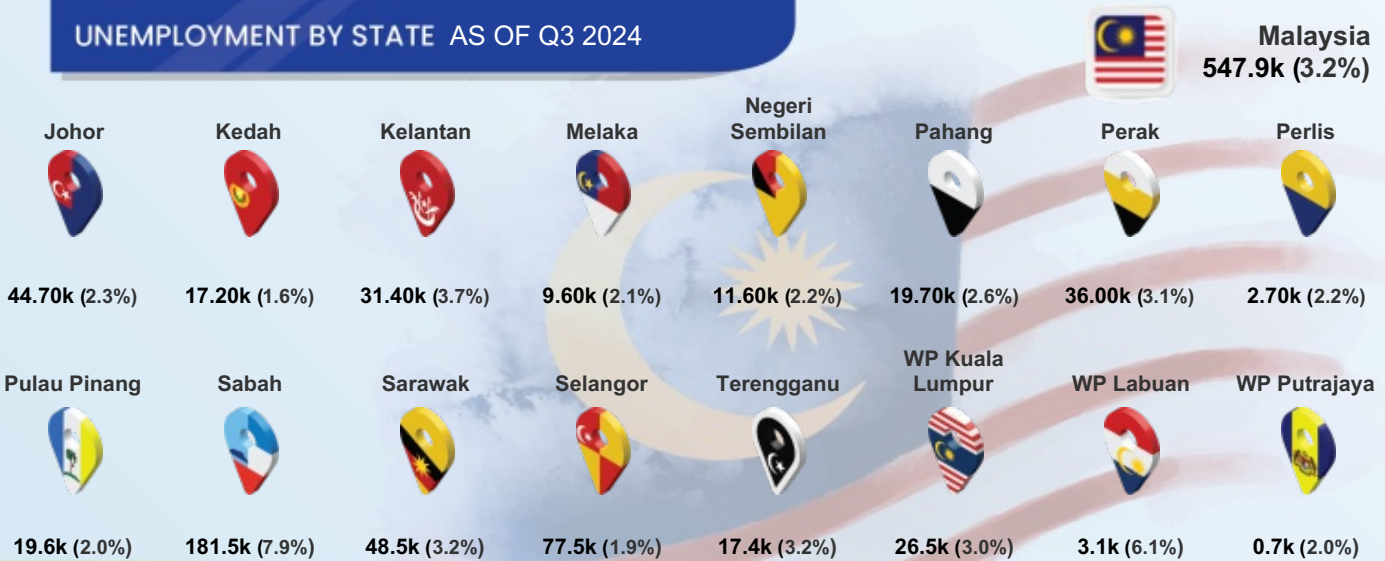
## PERKESO'S ACTIVE CONTRIBUTORS SEPTEMBER 2024

**Active Employees (ACT 4)**  
290,828

**Self Employment (ACT 789)**  
35,269

**Active Employees (ACT 800)**  
212,656

## UNEMPLOYMENT BY STATE AS OF Q3 2024



# QUICK FACTS



## MYFUTUREJOBS : VACANCIES

INDICATOR	2021	2022	2023	AS OF 6 DEC 2024
<b>KEDAH</b>	<b>61,802</b>	<b>134,183</b>	<b>47,744</b>	<b>31,787</b>
<b>Johor</b>	<b>242,847</b>	<b>820,368</b>	<b>191,623</b>	<b>136,689</b>
<b>Kedah</b>	<b>61,802</b>	<b>134,183</b>	<b>47,744</b>	<b>31,787</b>
<b>Kelantan</b>	<b>53,821</b>	<b>48,311</b>	<b>22,108</b>	<b>14,824</b>
<b>Melaka</b>	<b>62,228</b>	<b>156,513</b>	<b>45,209</b>	<b>39,163</b>
<b>Negeri Sembilan</b>	<b>86,720</b>	<b>181,371</b>	<b>62,360</b>	<b>35,262</b>
<b>Pahang</b>	<b>70,978</b>	<b>148,733</b>	<b>65,222</b>	<b>30,506</b>
<b>Perak</b>	<b>129,613</b>	<b>193,404</b>	<b>68,196</b>	<b>46,872</b>
<b>Perlis</b>	<b>10,429</b>	<b>5,867</b>	<b>4,889</b>	<b>4,196</b>
<b>Pulau Pinang</b>	<b>209,659</b>	<b>421,388</b>	<b>148,163</b>	<b>96,113</b>
<b>Sabah</b>	<b>74,450</b>	<b>98,434</b>	<b>104,003</b>	<b>108,042</b>
<b>Sarawak</b>	<b>266,591</b>	<b>242,245</b>	<b>240,529</b>	<b>296,207</b>
<b>Selangor</b>	<b>739,038</b>	<b>1,462,665</b>	<b>577,246</b>	<b>323,271</b>
<b>Terengganu</b>	<b>41,192</b>	<b>41,250</b>	<b>19,778</b>	<b>17,413</b>
<b>WP Kuala Lumpur</b>	<b>406,719</b>	<b>782,680</b>	<b>397,306</b>	<b>242,231</b>
<b>WP Labuan</b>	<b>7,511</b>	<b>856</b>	<b>832</b>	<b>1,758</b>
<b>WP Putrajaya</b>	<b>16,979</b>	<b>15,150</b>	<b>7,712</b>	<b>10,560</b>
<b>Primary</b>	<b>6,980</b>	<b>17,783</b>	<b>2,916</b>	<b>909</b>
<b>PMR/PT3</b>	<b>8,486</b>	<b>23,058</b>	<b>3,928</b>	<b>2,358</b>
<b>SPM (O-Level)</b>	<b>30,799</b>	<b>72,836</b>	<b>20,876</b>	<b>12,631</b>
<b>STPM (A-Level)</b>	<b>724</b>	<b>1,180</b>	<b>488</b>	<b>418</b>
<b>Diploma</b>	<b>9,692</b>	<b>12,419</b>	<b>12,999</b>	<b>10,502</b>
<b>Bachelor</b>	<b>5,018</b>	<b>6,785</b>	<b>6,476</b>	<b>4,756</b>
<b>Master</b>	<b>78</b>	<b>89</b>	<b>39</b>	<b>105</b>
<b>PhD</b>	<b>25</b>	<b>33</b>	<b>22</b>	<b>108</b>
<b>&lt;RM1,500</b>	<b>33,302</b>	<b>49,898</b>	<b>5,405</b>	<b>1,636</b>
<b>RM1,500-RM1,999</b>	<b>10,861</b>	<b>59,504</b>	<b>27,304</b>	<b>17,860</b>
<b>RM2,000-RM2,999</b>	<b>5,579</b>	<b>9,762</b>	<b>8,384</b>	<b>8,100</b>
<b>RM3,000-RM3,999</b>	<b>6,803</b>	<b>1,901</b>	<b>3,384</b>	<b>1,572</b>
<b>RM4,000-RM4,999</b>	<b>366</b>	<b>592</b>	<b>836</b>	<b>690</b>
<b>RM5,000-RM5,999</b>	<b>523</b>	<b>688</b>	<b>1,595</b>	<b>1,165</b>
<b>RM6,000-RM7,999</b>	<b>366</b>	<b>427</b>	<b>471</b>	<b>419</b>
<b>RM8,000-RM9,999</b>	<b>155</b>	<b>422</b>	<b>171</b>	<b>171</b>
<b>RM10,000-RM12,999</b>	<b>65</b>	<b>165</b>	<b>102</b>	<b>125</b>
<b>RM13,000-RM15,999</b>	<b>16</b>	<b>78</b>	<b>31</b>	<b>31</b>
<b>&gt;RM15,999</b>	<b>12</b>	<b>301</b>	<b>61</b>	<b>18</b>
<b>Revision Stage</b>	<b>3,754</b>	<b>10,445</b>	<b>0</b>	<b>0</b>



### STATE





### EDUCATION



### SALARY RANGE

## MYFUTUREJOBS : VACANCIES

INDICATOR	2021	2022	2023	AS OF 6 DEC 2024
<b>KEDAH</b>	<b>61,802</b>	<b>134,183</b>	<b>47,744</b>	<b>31,787</b>
 <b>OCCUPATION</b>				
Managers	1,408	3,108	4,311	2,978
Professionals	10,076	10,514	9,881	5,523
Technicians	8,156	7,703	7,065	6,404
Clerical Support Workers	2,956	6,803	3,869	4,570
Service & Sales	10,173	14,600	7,314	4,194
Skilled Agriculture	287	505	48	70
Craft & Related Trades Workers	9,186	5,248	2,674	1,553
Plant & Machine Operators	6,733	15,202	2,203	1,073
Elementary Occupations	12,827	70,500	10,379	5,422
 <b>INDUSTRY</b>				
Agriculture, Forestry And Fishing	998	4,693	642	455
Mining And Quarrying	151	31	111	25
Manufacturing	24,913	70,326	10,966	8,416
Electricity, Gas, Steam	232	169	247	71
Water Supply; Sewerage & Waste	280	1,132	2,118	173
Construction	3,587	17,238	5,575	3,516
Wholesale And Retail	5,909	10,974	9,394	4,458
Transportation	699	438	585	1,088
Accommodation And F&B	11,111	8,778	3,050	1,920
ICT	1,231	690	2,821	325
Financial And Insurance/Takaful	356	350	1,590	1,580
Real Estate	175	1,096	242	704
Professional & Technical	2,459	2,722	1,730	1,896
Administrative And Support Service	4,548	9,974	3,361	1,664
Defence Compulsory Social Security	500	40	49	1,854
Education	1,492	724	1,001	1,223
Human Health And Social Work	1,547	1,120	2,709	1,533
Arts, Entertainment And Recreation	192	132	281	95
Other Service Activities	1,251	3,506	1,225	781
Activities Of Households	171	50	44	4
Activities Of Extraterritorial	0	0	3	6

# QUICK FACTS



## MYFUTUREJOBS : REGISTRATION OF JOBSEKERS

INDICATOR	2021	2022	2023	AS OF 6 DEC 2024
<b>KEDAH</b>	<b>53,915</b>	<b>35,935</b>	<b>40,614</b>	<b>34,212</b>
<b>Johor</b>	105,481	60,832	52,959	40,606
<b>Kedah</b>	53,915	35,935	40,614	34,212
<b>Kelantan</b>	42,694	27,388	29,762	24,268
<b>Melaka</b>	29,338	21,191	18,429	14,077
<b>Negeri Sembilan</b>	38,557	23,494	23,864	16,776
<b>Pahang</b>	39,888	22,108	23,387	20,332
<b>Perak</b>	64,725	39,974	38,861	32,903
<b>Perlis</b>	6,163	4,297	4,545	3,848
<b>Pulau Pinang</b>	48,890	29,004	30,836	22,647
<b>Sabah</b>	70,738	48,510	47,961	41,286
<b>Sarawak</b>	54,536	41,956	42,530	32,196
<b>Selangor</b>	213,149	122,107	108,404	67,929
<b>Terengganu</b>	32,857	20,067	20,181	18,094
<b>WP Kuala Lumpur</b>	81,668	45,279	38,977	24,339
<b>WP Labuan</b>	2,062	1,779	1,738	1,411
<b>WP Putrajaya</b>	2,859	2,051	2,994	1,774
<b>Revision Stage</b>	457	353	399	371
<b>Male</b>	25,092	17,402	19,517	17,663
<b>Female</b>	28,823	18,533	21,097	16,549
<b>&lt;15</b>	5	6	4	7
<b>15 - 19</b>	63	1,101	1,428	3,113
<b>20 - 24</b>	13,993	13,072	15,454	13,703
<b>25 - 29</b>	19,849	11,342	12,138	6,887
<b>30 - 34</b>	8,480	4,914	5,150	3,531
<b>35 - 39</b>	4,457	2,610	2,824	2,247
<b>40 - 44</b>	2,535	1,305	1,467	1,611
<b>45 - 49</b>	1,911	730	907	1,095
<b>50 - 54</b>	1,272	454	606	858
<b>55 - 59</b>	826	263	447	648
<b>60 - 64</b>	364	100	155	254
<b>&gt;64</b>	155	32	34	257
<b>Revision Stage</b>	5	6	0	1



### STATE

### GENDER



### AGE GROUP

## MYFUTUREJOBS : REGISTRATION OF JOBSEEKERS



# QUICK FACTS

INDICATOR	2021	2022	2023	AS OF 6 DEC 2024
<b>KEDAH</b>	<b>53,915</b>	<b>35,935</b>	<b>40,614</b>	<b>34,212</b>
<b>EDUCATION</b>				
Primary	402	245	234	478
PMR/PT3	1,152	618	620	811
SPM (O-Level)	17,680	7,264	10,021	9,381
STPM (A-Level)	1,284	752	839	813
Diploma	8,040	6,243	6,783	4,685
Bachelor	9,992	6,828	7,079	5,409
Master	572	324	316	195
PhD	53	39	35	19
Revision Stage	14,740	13,622	14,687	12,421
<b>OKU</b>				
Total	90	84	322	443
Hearing impairment	17	5	20	42
Learning disability	2	12	41	102
Mental disability	13	10	33	25
Multiple disability	0	3	14	17
Physical disability	56	52	179	228
Speech impairment	2	1	6	8
Visual impairment	0	1	29	21

# QUICK FACTS



## MYFUTUREJOBS : PLACEMENT

INDICATOR	2021	2022	2023	AS OF 29 NOV 2024
<b>KEDAH</b>	<b>11,963</b>	<b>11,416</b>	<b>8,896</b>	<b>9,173</b>
<b>STATE</b>				
Johor	39,725	33,037	19,853	21,201
Kedah	11,963	11,416	8,896	9,173
Kelantan	5,336	17,834	3,439	3,980
Melaka	9,084	8,104	6,314	6,072
Negeri Sembilan	9,095	7,226	6,834	6,162
Pahang	7,942	6,524	5,739	7,783
Perak	17,437	15,917	9,108	11,115
Perlis	1,126	1,047	910	1,090
Pulau Pinang	29,385	21,588	18,028	15,441
Sabah	6,977	19,297	11,957	10,873
Sarawak	13,336	15,443	11,568	12,738
Selangor	80,122	57,128	54,846	41,694
Terengganu	8,414	5,427	4,366	4,475
WP Kuala Lumpur	64,750	67,439	37,832	25,986
WP Labuan	452	687	598	497
WP Putrajaya	15,720	5,930	987	2,717
Revision Stage	0	0	13,639	13,442
<b>GENDER</b>				
Male	6,844	6,026	4,341	4,801
Female	5,119	5,390	4,555	4,372
<b>OKU</b>				
Total Disabled Person	86	181	111	201
<b>AGE GROUP</b>				
15 - 19	1,276	462	287	260
20 - 24	3,682	3,007	3,032	3,169
25 - 29	2,425	2,914	2,790	2,187
30 - 34	1,392	1,613	1,150	1,056
35 - 39	1,078	1,095	641	1,027
40 - 44	769	785	373	583
45 - 49	641	665	283	402
50 - 54	378	534	201	221
55 - 59	235	290	99	115
60 - 64	53	42	40	77
>64	34	9	0	76
<b>EDUCATION</b>				
Primary	166	189	138	220
PMR/PT3	390	443	320	241
SPM (O-Level)	4,932	4,663	3,158	4,402
STPM (A-Level)	320	366	206	178
Diploma	2,179	2,394	1,672	1,848
Bachelor	1,568	2,362	1,667	1,551
Master	89	91	55	72
PhD	12	4	5	10
Revision Stage	2,307	904	1,675	651

## MYFUTUREJOBS : PLACEMENT

## INDICATOR

2021

2022

2023

AS OF  
29 NOV 2024

KEDAH

11,963

11,416

8,896

9,173

<RM1,500	2,960	1,544	1,643	545
RM1,500-RM1,999	5,105	2,630	4,630	5,454
RM2,000-RM2,999	1,617	1,216	1,685	1,353
RM3,000-RM3,999	546	615	423	627
RM4,000-RM4,999	208	501	158	257
RM5,000-RM5,999	92	81	131	383
RM6,000-RM7,999	114	19	18	30
RM8,000-RM9,999	49	22	8	17
RM10,000-RM12,999	27	9	6	12
RM13,000-RM15,999	6	3	3	8
>RM15,999	7	10	4	7
Revision Stage	1,232	4,766	187	480

## SALARY RANGE

Managers	470	360	394	373
Professionals	1,826	1,099	1,089	1,146
Technicians	1,804	1,611	1,635	1,146
Clerical Support Workers	654	403	943	1,131
Service and Sales	1,715	1,641	1,627	885
Skilled Agriculture	20	33	34	15
Craft and related Trades Workers	516	96	283	278
Plant and Machine Operators	1,712	1,255	927	2,439
Elementary Occupations	1,774	410	1,258	867
Revision Stage	1,472	4,508	706	893

## OCCUPATION

Agriculture, Forestry And Fishing	264	92	93	72
Mining & Quarrying	46	19	14	6
Manufacturing	2,765	3,623	2,644	3,636
Electricity, Gas, Steam	47	26	52	41
Water Supply, Sewerage & Waste	32	83	58	47
Construction	599	283	395	259
Wholesale And Retail	908	1,295	1,058	903
Transportation	146	473	396	146
Accommodation And F&B	1,308	659	718	709
ICT	171	105	166	182
Financial And Insurance/Takaful	73	189	109	150
Real Estate	19	24	57	29
Professional & Technical	246	319	264	209
Administrative And Support Service	1,159	263	369	163
Defence Compulsory Social Security	222	235	284	723
Education	345	109	180	113
Human Health And Social Work	345	102	223	207
Arts, Entertainment And Recreation	81	59	73	43
Other Service Activities	1,238	709	1,589	1,178
Activities Of Households	91	62	34	12
Activities Of Extraterritorial	46	12	25	56
Revision Stage	1,812	2,675	95	289

## INDUSTRY






# QUICK FACTS



## LOSS OF EMPLOYMENT

INDICATOR	2021	2022	2023	AS OF 6 DEC 2024
<b>KEDAH</b>	<b>2,932</b>	<b>1,189</b>	<b>1,750</b>	<b>2,567</b>
<b>Johor</b>	5,145	3,199	5,099	4,337
<b>Kedah</b>	2,932	1,189	1,750	2,567
<b>Kelantan</b>	374	666	560	623
<b>Melaka</b>	987	543	1,806	1,561
<b>Negeri Sembilan</b>	1,079	632	1,432	1,231
<b>Pahang</b>	861	659	1,066	1,060
<b>Perak</b>	2,675	1,664	1,647	1,845
<b>Perlis</b>	146	40	140	208
<b>Pulau Pinang</b>	3,529	2,112	5,844	9,877
<b>Sabah</b>	2,934	1,299	1,420	1,278
<b>Sarawak</b>	1,982	1,065	2,410	3,414
<b>Selangor</b>	21,198	10,546	14,763	13,966
<b>Terengganu</b>	704	817	502	613
<b>WP Kuala Lumpur</b>	16,488	9,766	11,116	11,659
<b>WP Labuan</b>	220	110	123	125
<b>WP Putrajaya</b>	106	75	304	122
<b>Revision Stage</b>	0	6	0	21
<b>STATE</b>				
<b>Male</b>	1,699	706	832	1,207
<b>Female</b>	1,233	483	918	1,360
<b>GENDER</b>				
<b>Primary</b>	65	30	98	184
<b>PMR/PT3</b>	182	91	146	317
<b>SPM (O-Level)</b>	1,231	535	893	1,362
<b>STPM (A-Level)</b>	115	44	49	40
<b>Diploma</b>	878	278	357	401
<b>Bachelor</b>	371	173	185	239
<b>Master</b>	24	19	20	23
<b>PhD</b>	4	1	2	1
<b>Revision Stage</b>	62	18	0	0
<b>EDUCATION</b>				
<b>&lt;RM1,500</b>	840	271	374	377
<b>RM1,500-RM1,999</b>	415	344	542	647
<b>RM2,000-RM2,999</b>	813	298	366	792
<b>RM3,000-RM3,999</b>	409	120	213	325
<b>RM4,000-RM4,999</b>	200	68	89	169
<b>RM5,000-RM5,999</b>	84	26	46	104
<b>RM6,000-RM7,999</b>	78	27	51	77
<b>RM8,000-RM9,999</b>	41	11	16	24
<b>RM10,000-RM12,999</b>	11	9	21	19
<b>RM13,000-RM15,999</b>	7	3	14	6
<b>&gt;RM15,999</b>	8	7	10	9
<b>Revision Stage</b>	26	5	8	18
<b>SALARY RANGE</b>				

## LOSS OF EMPLOYMENT

INDICATOR	2021	2022	2023	AS OF 6 DEC 2024
	KEDAH	2,932	1,189	1,750
 OCCUPATION				
Managers	202	96	167	150
Professionals	479	205	240	250
Technicians	849	290	255	319
Clerical Support Workers	236	101	174	193
Service and Sales	338	76	105	184
Skilled Agriculture	0	0	0	6
Craft & Related Trades Workers	62	12	37	47
Plant and Machine Operators	564	342	543	1,270
Elementary Occupations	197	64	229	145
Revision Stage	5	3	0	3
 INDUSTRY				
Agriculture, Forestry And Fishing	6	3	19	11
Mining And Quarrying	0	1	0	0
Manufacturing	1,542	490	803	1,418
Electricity, Gas, Steam	16	0	1	0
Water Supply, Sewerage & Waste	11	13	5	2
Construction	143	61	81	115
Wholesale & Retail	218	95	291	305
Transportation	25	5	20	67
Accommodation And F&B	596	13	35	203
ICT	13	11	91	24
Financial And Insurance/Takaful	17	6	16	13
Real Estate	18	8	7	6
Professional & Technical	49	308	38	23
Administrative And Support Service	129	49	104	279
Defence Compulsory Social Security	5	12	56	7
Education	27	18	1	17
Human Health And Social Work	15	12	17	17
Arts, Entertainment And Recreation	33	7	1	14
Other Service Activities	69	66	158	44
Activities Of Households	0	1	2	1
Activities Of Extraterritorial	0	10	4	0
Revision Stage	0	0	0	1
 REASON FOR LOSS OF EMPLOYMENT				
Closure of Business / Division	1,050	382	422	472
Downsizing	265	294	377	624
Financial Difficulties	322	100	128	129
Performance-Based Dismissal	207	86	147	144
Voluntary Resignation	148	75	67	93
VSS / MSS / Early Retirement Package	361	144	441	866
Other Reasons	579	108	168	239