



MINISTRY OF HUMAN RESOURCES



PERKESO



# PERLIS QUICK FACTS

EMPLOYMENT INSURANCE SYSTEM

AS OF 13 DECEMBER 2024





MINISTRY OF HUMAN RESOURCES



EMPLOYMENT INSURANCE SYSTEM

# QUICK FACTS



## EMPLOYMENT INSURANCE SYSTEM QUICK FACTS AS OF 13 DECEMBER 2024

	2021	2022	2023	2024	TOTAL
Vacancy	10,429	5,867	4,889	4,228	25,413
Active Vacancies				164	
Jobseeker	6,163	4,297	4,545	3,873	18,878
Placement	1,126	1,047	910	1,114	4,197
Loss of Employment	146	40	140	210	536

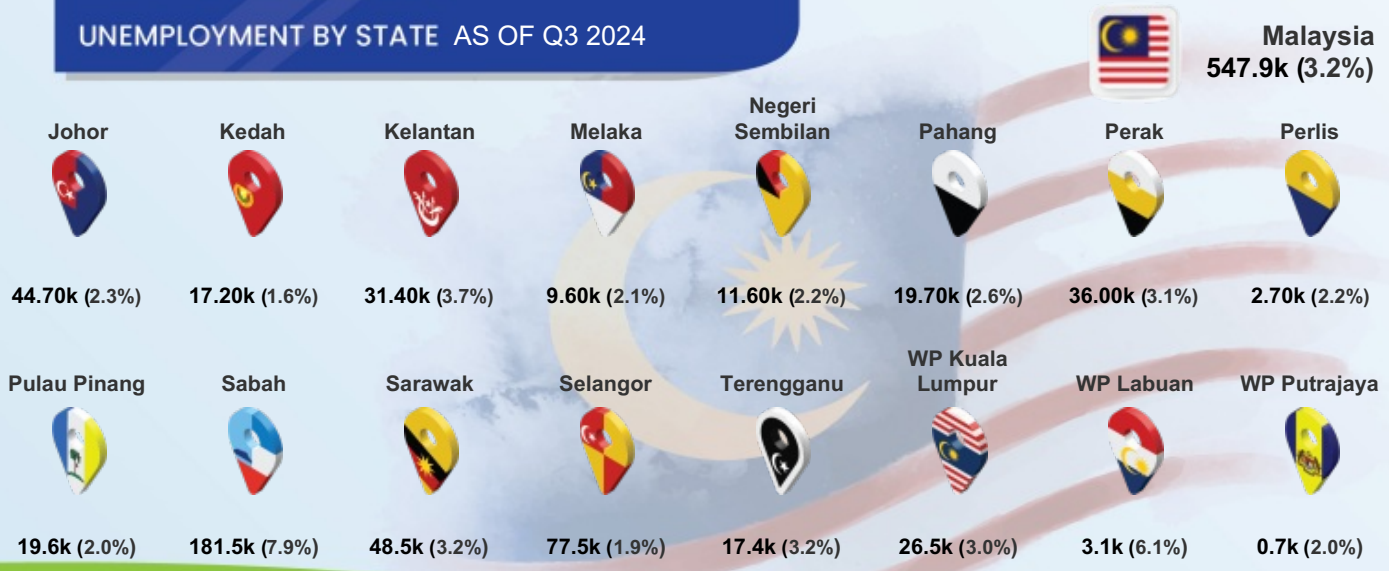
## PERKESO'S ACTIVE CONTRIBUTORS SEPTEMBER 2024

**Active Employees (ACT 4)**  
21,459

**Self Employment (ACT 789)**  
6,303

**Active Employees (ACT 800)**  
15,668

## UNEMPLOYMENT BY STATE AS OF Q3 2024



Notes: (%) show unemployment rates



# QUICK FACTS



## MYFUTUREJOBS : VACANCIES

INDICATOR	2021	2022	2023	AS OF 13 DEC 2024
PERLIS	10,429	5,867	4,889	4,228
<b>STATE</b>				
Johor	242,847	820,368	191,623	139,640
Kedah	61,802	134,183	47,744	33,367
Kelantan	53,821	48,311	22,108	15,150
Melaka	62,228	156,513	45,209	39,776
Negeri Sembilan	86,720	181,371	62,360	35,798
Pahang	70,978	148,733	65,222	30,948
Perak	129,613	193,404	68,196	47,342
Perlis	10,429	5,867	4,889	4,228
Pulau Pinang	209,659	421,388	148,163	98,182
Sabah	74,450	98,434	104,003	109,757
Sarawak	266,591	242,245	240,529	301,193
Selangor	739,038	1,462,665	577,246	332,905
Terengganu	41,192	41,250	19,778	17,652
WP Kuala Lumpur	406,719	782,680	397,306	245,547
WP Labuan	7,511	856	832	1,774
WP Putrajaya	16,979	15,150	7,712	10,647
<b>EDUCATION</b>				
Primary	4,612	791	359	69
PMR/PT3	2,455	247	298	230
SPM (O-Level)	2,120	3,915	2,810	1,530
STPM (A-Level)	24	32	19	22
Diploma	859	575	1,177	1,599
Bachelor	352	276	226	766
Master	1	13	0	0
PhD	6	18	0	12
<b>SALARY RANGE</b>				
<RM1,500	3,095	2,093	1,216	189
RM1,500-RM1,999	289	2,805	2,576	1,694
RM2,000-RM2,999	553	492	643	1,620
RM3,000-RM3,999	5,838	105	305	347
RM4,000-RM4,999	3	14	13	282
RM5,000-RM5,999	15	37	11	41
RM6,000-RM7,999	4	19	125	48
RM8,000-RM9,999	1	1	0	3
RM13,000-RM15,999	0	0	0	4
Revision Stage	631	301	0	0

## MYFUTUREJOBS : VACANCIES

INDICATOR	2021	2022	2023	AS OF 13 DEC 2024
<b>PERLIS</b>	<b>10,429</b>	<b>5,867</b>	<b>4,889</b>	<b>4,228</b>
 <b>OCCUPATION</b>				
Managers	121	307	241	841
Professionals	1,804	622	1,627	486
Technicians	1,786	424	1,002	1,127
Clerical Support Workers	182	735	466	604
Service & Sales	2,861	1,014	454	507
Skilled Agriculture	2	6	1	10
Craft & Related Trades Workers	643	146	91	40
Plant & Machine Operators	1,293	108	102	307
Elementary Occupations	1,737	2,505	905	306
 <b>INDUSTRY</b>				
Agriculture, Forestry And Fishing	25	51	57	78
Mining And Quarrying	1	6	5	2
Manufacturing	644	1,348	201	298
Electricity, Gas, Steam	6	0	8	29
Water Supply; Sewerage & Waste	2	1	0	29
Construction	223	1,075	349	135
Wholesale And Retail	542	1,340	788	1,507
Transportation	9	12	28	300
Accommodation And F&B	6,968	768	542	402
ICT	618	30	1,278	112
Financial And Insurance/Takaful	159	227	535	582
Real Estate	40	32	17	0
Professional & Technical	134	59	50	57
Administrative And Support Service	149	598	647	324
Defence Compulsory Social Security	7	10	63	116
Education	342	127	89	89
Human Health And Social Work	473	61	112	50
Arts, Entertainment And Recreation	1	1	1	24
Other Service Activities	86	70	65	94
Activities Of Households	0	51	54	0

# QUICK FACTS

## MYFUTUREJOBS : REGISTRATION OF JOBSEKERS

INDICATOR	2021	2022	2023	AS OF 13 DEC 2024
PERLIS	6,163	4,297	4,545	3,873
<b>Johor</b>	105,481	60,832	52,959	40,952
<b>Kedah</b>	53,915	35,935	40,614	34,568
<b>Kelantan</b>	42,694	27,388	29,762	24,493
<b>Melaka</b>	29,338	21,191	18,429	14,184
<b>Negeri Sembilan</b>	38,557	23,494	23,864	16,888
<b>Pahang</b>	39,888	22,108	23,387	20,500
<b>Perak</b>	64,725	39,974	38,861	33,194
<b>Perlis</b>	6,163	4,297	4,545	3,873
<b>Pulau Pinang</b>	48,890	29,004	30,836	22,917
<b>Sabah</b>	70,738	48,510	47,961	41,504
<b>Sarawak</b>	54,536	41,956	42,530	32,488
<b>Selangor</b>	213,149	122,107	108,404	68,492
<b>Terengganu</b>	32,857	20,067	20,181	18,263
<b>WP Kuala Lumpur</b>	81,668	45,279	38,977	24,603
<b>WP Labuan</b>	2,062	1,779	1,738	1,417
<b>WP Putrajaya</b>	2,859	2,051	2,994	1,791
<b>Revision Stage</b>	457	353	399	375
<b>Male</b>	2,859	1,910	2,005	1,898
<b>Female</b>	3,304	2,387	2,540	1,975
<b>&lt;15</b>	2	1	1	1
<b>15 - 19</b>	2	147	230	415
<b>20 - 24</b>	1,599	1,578	1,711	1,518
<b>25 - 29</b>	2,363	1,362	1,367	805
<b>30 - 34</b>	1,088	613	593	441
<b>35 - 39</b>	552	310	356	273
<b>40 - 44</b>	273	142	168	173
<b>45 - 49</b>	126	72	56	97
<b>50 - 54</b>	73	37	37	68
<b>55 - 59</b>	51	24	16	44
<b>60 - 64</b>	25	6	7	19
<b>&gt;64</b>	9	4	3	19
<b>Revision Stage</b>	0	1	0	0



STATE

GENDER

AGE  
GROUP

## MYFUTUREJOBS : REGISTRATION OF JOBSEEKERS



# QUICK FACTS

INDICATOR	2021	2022	2023	AS OF 13 DEC 2024
PERLIS	6,163	4,297	4,545	3,873
<b>EDUCATION</b>				
Primary	25	15	26	49
PMR/PT3	141	103	86	91
SPM (O-Level)	1,766	972	1,198	963
STPM (A-Level)	169	126	127	140
Diploma	840	648	752	577
Bachelor	1,105	769	810	682
Master	65	45	40	26
PhD	10	7	6	4
Revision Stage	2,042	1,612	1,500	1,341
<b>OKU</b>				
Total	11	7	38	55
Hearing impairment	2	0	2	8
Learning disability	3	1	7	19
Mental disability	2	0	7	2
Multiple disability	0	0	0	2
Physical disability	4	6	17	20
Speech impairment	0	0	2	1
Visual impairment	0	0	3	3

# QUICK FACTS



## MYFUTUREJOBS : PLACEMENT

INDICATOR	2021	2022	2023	AS OF 6 DEC 2024
<b>PERLIS</b>	<b>1,126</b>	<b>1,047</b>	<b>910</b>	<b>1,114</b>
<b>STATE</b>				
Johor	39,725	33,037	19,853	21,709
Kedah	11,963	11,416	8,896	9,345
Kelantan	5,336	17,834	3,439	4,033
Melaka	9,084	8,104	6,314	6,130
Negeri Sembilan	9,095	7,226	6,834	6,329
Pahang	7,942	6,524	5,739	7,844
Perak	17,437	15,917	9,108	11,250
Perlis	1,126	1,047	910	1,114
Pulau Pinang	29,385	21,588	18,028	15,876
Sabah	6,977	19,297	11,957	11,079
Sarawak	13,336	15,443	11,568	13,087
Selangor	80,122	57,128	54,846	42,512
Terengganu	8,414	5,427	4,366	4,547
WP Kuala Lumpur	64,750	67,439	37,832	26,415
WP Labuan	452	687	598	528
WP Putrajaya	15,720	5,930	987	2,719
Revision Stage	0	0	13,639	14,488
<b>GENDER</b>				
Male	587	508	435	533
Female	539	539	475	581
<b>OKU</b>				
Total Disabled Person	6	8	9	29
<b>AGE GROUP</b>				
15 - 19	175	90	48	32
20 - 24	373	353	340	406
25 - 29	274	281	283	299
30 - 34	131	139	112	140
35 - 39	70	73	58	121
40 - 44	39	39	31	43
45 - 49	24	22	21	28
50 - 54	22	29	11	27
55 - 59	15	16	4	10
60 - 64	3	2	2	5
>64	0	3	0	3
<b>EDUCATION</b>				
Primary	8	8	5	35
PMR/PT3	49	39	33	37
SPM (O-Level)	474	465	325	413
STPM (A-Level)	32	34	46	36
Diploma	162	255	157	213
Bachelor	226	203	216	268
Master	9	9	8	14
PhD	2	1	2	2
Revision Stage	164	33	118	96

**MYFUTUREJOBS : PLACEMENT**
**INDICATOR**

2021

2022

2023

AS OF  
6 DEC 2024

PERLIS

1,126

1,047

910

1,114

<RM1,500	512	246	162	84
RM1,500-RM1,999	294	538	565	783
RM2,000-RM2,999	101	114	140	136
RM3,000-RM3,999	31	12	22	28
RM4,000-RM4,999	3	14	5	7
RM5,000-RM5,999	5	2	2	13
RM6,000-RM7,999	3	0	0	1
RM8,000-RM9,999	5	0	1	1
>RM15,999	1	0	0	2
Revision Stage	171	121	13	59


**SALARY  
RANGE**

**OCCUPATION**

Managers	45	14	18	49
Professionals	144	49	180	148
Technicians	107	52	95	184
Clerical Support Workers	112	27	82	193
Service and Sales	225	418	229	146
Skilled Agriculture	2	8	4	9
Craft and related Trades Workers	15	16	41	32
Plant and Machine Operators	247	220	37	96
Elementary Occupations	77	32	190	151
Revision Stage	152	211	34	106


**INDUSTRY**

Agriculture, Forestry And Fishing	36	13	4	35
Mining & Quarrying	3	0	2	0
Manufacturing	295	274	59	127
Electricity, Gas, Steam	4	0	5	6
Water Supply, Sewerage & Waste	7	3	40	23
Construction	20	17	54	30
Wholesale And Retail	76	323	115	187
Transportation	23	15	35	39
Accommodation And F&B	153	66	220	160
ICT	7	16	7	3
Financial And Insurance/Takaful	10	43	19	40
Real Estate	5	0	3	0
Professional & Technical	13	17	26	13
Administrative And Support Service	27	93	51	29
Defence Compulsory Social Security	16	23	22	183
Education	30	16	42	36
Human Health And Social Work	16	15	18	13
Arts, Entertainment And Recreation	14	2	5	1
Other Service Activities	163	42	161	141
Activities Of Households	9	6	4	0
Activities Of Extraterritorial	1	0	1	1
Revision Stage	198	63	17	47






# QUICK FACTS



## LOSS OF EMPLOYMENT

INDICATOR	2021	2022	2023	AS OF 13 DEC 2024
	PERLIS	146	40	140
<b>Johor</b>	5,145	3,199	5,099	4,431
<b>Kedah</b>	2,932	1,189	1,750	2,611
<b>Kelantan</b>	374	666	560	662
<b>Melaka</b>	987	543	1,806	1,578
<b>Negeri Sembilan</b>	1,079	632	1,432	1,254
<b>Pahang</b>	861	659	1,066	1,084
<b>Perak</b>	2,675	1,664	1,647	1,896
<b>Perlis</b>	146	40	140	210
<b>Pulau Pinang</b>	3,529	2,112	5,844	9,941
<b>Sabah</b>	2,934	1,299	1,420	1,335
<b>Sarawak</b>	1,982	1,065	2,410	3,549
<b>Selangor</b>	21,198	10,546	14,763	14,194
<b>Terengganu</b>	704	817	502	622
<b>WP Kuala Lumpur</b>	16,488	9,766	11,116	11,885
<b>WP Labuan</b>	220	110	123	128
<b>WP Putrajaya</b>	106	75	304	140
<b>Revision Stage</b>	0	6	0	22
<b>STATE</b>				
<b>Male</b>	95	23	76	123
<b>Female</b>	51	17	64	87
<b>GENDER</b>				
<b>Primary</b>	4	0	6	6
<b>PMR/PT3</b>	15	9	16	16
<b>SPM (O-Level)</b>	73	17	67	114
<b>STPM (A-Level)</b>	6	0	6	1
<b>Diploma</b>	26	7	29	54
<b>Bachelor</b>	18	4	15	17
<b>Master</b>	2	2	1	2
<b>Revision Stage</b>	2	1	0	0
<b>EDUCATION</b>				
<b>&lt;RM1,500</b>	55	23	66	38
<b>RM1,500-RM1,999</b>	10	7	52	89
<b>RM2,000-RM2,999</b>	44	5	17	18
<b>RM3,000-RM3,999</b>	17	3	2	13
<b>RM4,000-RM4,999</b>	8	2	0	10
<b>RM5,000-RM5,999</b>	3	0	0	9
<b>RM6,000-RM7,999</b>	5	0	0	9
<b>RM8,000-RM9,999</b>	0	0	2	2
<b>RM10,000-RM12,999</b>	1	0	1	4
<b>RM13,000-RM15,999</b>	1	0	0	5
<b>&gt;RM15,999</b>	2	0	0	11
<b>Revision Stage</b>	0	0	0	2
<b>SALARY RANGE</b>				

**LOSS OF EMPLOYMENT**

INDICATOR	2021	2022	2023	AS OF 13 DEC 2024
<b>PERLIS</b>	<b>146</b>	<b>40</b>	<b>140</b>	<b>210</b>
 <b>OCCUPATION</b>				
Managers	12	9	10	7
Professionals	14	4	15	23
Technicians	23	3	12	34
Clerical Support Workers	29	5	19	18
Service and Sales	22	3	14	15
Skilled Agriculture	1	0	0	0
Craft & Related Trades Workers	6	0	0	1
Plant and Machine Operators	22	2	65	83
Elementary Occupations	17	14	5	29
 <b>INDUSTRY</b>				
Agriculture, Forestry And Fishing	1	0	0	0
Manufacturing	71	9	51	57
Electricity, Gas, Steam	0	0	0	46
Water Supply, Sewerage & Waste	0	0	1	11
Construction	4	5	16	4
Wholesale & Retail	15	14	23	36
Transportation	19	5	9	9
Accommodation And F&B	12	0	6	3
ICT	1	0	0	0
Financial And Insurance/Takaful	4	0	0	20
Professional & Technical	3	3	5	0
Administrative And Support Service	8	0	2	19
Defence Compulsory Social Security	0	0	8	0
Education	3	2	6	4
Human Health And Social Work	1	0	10	0
Other Service Activities	4	2	3	1
 <b>REASON FOR LOSS OF EMPLOYMENT</b>				
Closure of Business / Division	8	8	49	73
Downsizing	5	1	28	56
Financial Difficulties	9	7	7	3
Performance-Based Dismissal	6	11	8	12
Voluntary Resignation	8	3	2	0
VSS / MSS / Early Retirement Package	71	1	31	31
Other Reasons	39	9	15	35