



MINISTRY OF HUMAN RESOURCES



PERKESO



PULAU PINANG

# QUICK FACTS

EMPLOYMENT INSURANCE SYSTEM

AS OF 21 JUNE 2024





# QUICK FACTS



## EMPLOYMENT INSURANCE SYSTEM QUICK FACTS AS OF 21 JUNE 2024

	2021	2022	2023	2024	TOTAL
Vacancy	209,659	421,388	148,163	44,634	823,844
Active Vacancies				7,785	
Jobseeker	48,890	29,004	30,836	12,711	121,441
Placement	29,385	21,588	18,028	5,379	74,380
Loss of Employment	3,529	2,112	5,844	3,577	15,062

## PERKESO'S ACTIVE CONTRIBUTORS MARCH 2024

Active Employees (ACT 4)

641,950

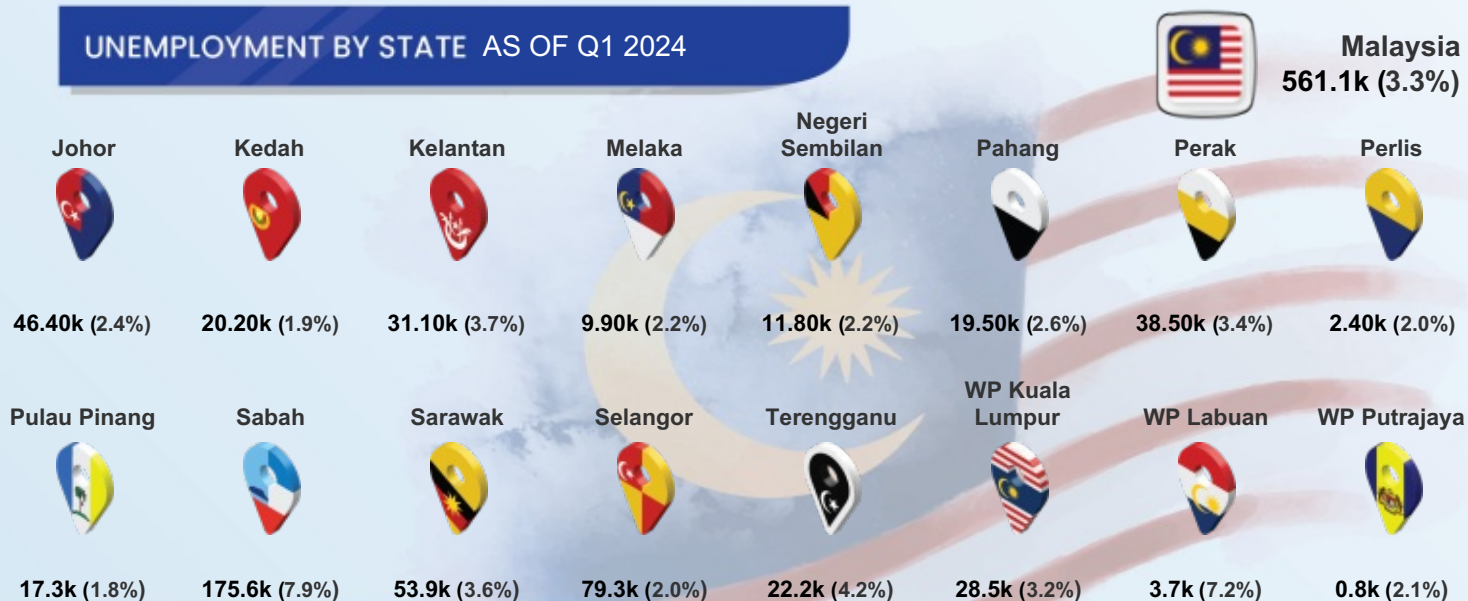
Self Employment (ACT 789)

18,910

Active Employees (ACT 800)

442,011

## UNEMPLOYMENT BY STATE AS OF Q1 2024



Notes: (%) show unemployment rates

# QUICK FACTS



## MYFUTUREJOBS : VACANCIES

INDICATOR	2021	2022	2023	AS OF 21 JUN 2024
<b>PULAU PINANG</b>	<b>209,659</b>	<b>421,388</b>	<b>148,163</b>	<b>44,634</b>
<b>Johor</b>	242,847	820,368	191,623	72,560
<b>Kedah</b>	61,802	134,183	47,744	16,621
<b>Kelantan</b>	53,821	48,311	22,108	7,215
<b>Melaka</b>	62,228	156,513	45,209	15,764
<b>Negeri Sembilan</b>	86,720	181,371	62,360	19,684
<b>Pahang</b>	70,978	148,733	65,222	13,806
<b>Perak</b>	129,613	193,404	68,196	25,510
<b>Perlis</b>	10,429	5,867	4,889	1,374
<b>Pulau Pinang</b>	209,659	421,388	148,163	44,634
<b>Sabah</b>	74,450	98,434	104,003	48,518
<b>Sarawak</b>	266,591	242,245	240,529	141,101
<b>Selangor</b>	739,038	1,462,665	577,246	164,984
<b>Terengganu</b>	41,192	41,250	19,778	7,888
<b>WP Kuala Lumpur</b>	406,719	782,680	397,306	134,873
<b>WP Labuan</b>	7,511	856	832	974
<b>WP Putrajaya</b>	16,979	15,150	7,712	6,230
<b>STATE</b>				
<b>Primary</b>	16,897	55,978	12,416	594
<b>PMR/PT3</b>	33,549	102,906	14,188	3,649
<b>SPM (O-Level)</b>	106,807	209,999	64,956	18,084
<b>STPM (A-Level)</b>	1,995	4,815	1,244	390
<b>Diploma</b>	29,412	28,806	26,561	10,987
<b>Bachelor</b>	20,665	18,666	28,558	10,724
<b>Master</b>	249	166	207	180
<b>PhD</b>	85	52	33	26
<b>EDUCATION</b>				
<b>&lt;RM1,500</b>	79,254	138,804	8,632	1,907
<b>RM1,500-RM1,999</b>	58,678	177,045	74,722	14,441
<b>RM2,000-RM2,999</b>	31,014	46,956	29,075	13,550
<b>RM3,000-RM3,999</b>	13,818	9,189	13,679	5,638
<b>RM4,000-RM4,999</b>	1,772	2,145	12,151	3,034
<b>RM5,000-RM5,999</b>	2,483	2,280	5,387	2,068
<b>RM6,000-RM7,999</b>	1,470	4,279	1,404	1,661
<b>RM8,000-RM9,999</b>	891	1,228	1,215	764
<b>RM10,000-RM12,999</b>	670	745	1,385	1,225
<b>RM13,000-RM15,999</b>	201	411	259	243
<b>&gt;RM15,999</b>	75	513	250	103
<b>SALARY RANGE</b>				
<b>Revision Stage</b>	19,333	37,793	4	0

## MYFUTUREJOBS : VACANCIES

QUICK  
FACTS

INDICATOR	2021	2022	2023	AS OF 21 JUN 2024
<b>PULAU PINANG</b>	<b>209,659</b>	<b>421,388</b>	<b>148,163</b>	<b>44,634</b>
<b>Managers</b>	5,585	11,281	12,113	5,679
<b>Professionals</b>	30,995	25,340	26,557	8,560
<b>Technicians</b>	27,124	25,234	16,957	6,958
<b>Clerical Support Workers</b>	14,629	14,028	11,421	7,573
<b>Service &amp; Sales</b>	18,770	31,279	18,943	7,073
<b>Skilled Agriculture</b>	64	429	127	12
<b>Craft &amp; Related Trades Workers</b>	14,973	30,464	6,456	1,154
<b>Plant &amp; Machine Operators</b>	30,807	60,434	7,346	2,420
<b>Elementary Occupations</b>	66,712	222,899	48,243	5,205
<b>Agriculture, Forestry And Fishing</b>	178	1,768	303	41
<b>Mining And Quarrying</b>	200	341	9	2
<b>Manufacturing</b>	106,508	246,671	49,147	11,786
<b>Electricity, Gas, Steam</b>	476	929	495	153
<b>Water Supply; Sewerage &amp; Waste</b>	3,263	5,600	1,576	292
<b>Construction</b>	3,583	46,028	18,236	3,053
<b>Wholesale And Retail</b>	11,817	20,867	14,372	3,672
<b>Transportation</b>	8,791	3,323	2,382	2,335
<b>Accommodation And F&amp;B</b>	22,333	24,683	13,859	2,864
<b>ICT</b>	5,329	7,285	6,060	7,812
<b>Financial And Insurance/Takaful</b>	1,764	2,850	5,327	1,251
<b>Real Estate</b>	266	271	158	171
<b>Professional &amp; Technical</b>	8,656	11,829	11,632	2,129
<b>Administrative And Support Service</b>	20,035	25,312	13,479	4,580
<b>Defence Compulsory Social Security</b>	544	1,201	526	752
<b>Education</b>	3,440	3,438	1,888	917
<b>Human Health And Social Work</b>	3,838	3,339	4,092	2,249
<b>Arts, Entertainment And Recreation</b>	301	612	209	97
<b>Other Service Activities</b>	6,390	14,114	4,221	457
<b>Activities Of Households</b>	1,947	925	166	12
<b>Activities Of Extraterritorial</b>	0	2	26	9



## OCCUPATION



## INDUSTRY



# QUICK FACTS



## MYFUTUREJOBS : REGISTRATION OF JOBSEEKERS

INDICATOR	2021	2022	2023	AS OF 21 JUN 2024
<b>PULAU PINANG</b>	<b>48,890</b>	<b>29,004</b>	<b>30,836</b>	<b>12,711</b>
<b>Johor</b>	105,481	60,832	52,959	21,015
<b>Kedah</b>	53,915	35,935	40,614	19,345
<b>Kelantan</b>	42,694	27,388	29,762	14,735
<b>Melaka</b>	29,338	21,191	18,429	7,000
<b>Negeri Sembilan</b>	38,557	23,494	23,864	9,066
<b>Pahang</b>	39,888	22,108	23,387	10,929
<b>Perak</b>	64,725	39,974	38,861	17,385
<b>Perlis</b>	6,163	4,297	4,545	2,194
<b>Pulau Pinang</b>	48,890	29,004	30,836	12,711
<b>Sabah</b>	70,738	48,510	47,961	24,880
<b>Sarawak</b>	54,536	41,956	42,530	18,415
<b>Selangor</b>	213,149	122,107	108,404	38,588
<b>Terengganu</b>	32,857	20,067	20,181	9,733
<b>WP Kuala Lumpur</b>	81,668	45,279	38,977	13,604
<b>WP Labuan</b>	2,062	1,779	1,738	771
<b>WP Putrajaya</b>	2,859	2,051	2,994	1,023
<b>Revision Stage</b>	457	353	399	202
<b>Male</b>	24,140	14,162	15,294	6,602
<b>Female</b>	24,750	14,842	15,542	6,109
<b>&lt;15</b>	2	2	3	2
<b>15 - 19</b>	101	773	1,041	875
<b>20 - 24</b>	11,527	8,649	10,013	4,135
<b>25 - 29</b>	15,476	8,608	8,475	2,510
<b>30 - 34</b>	7,350	4,406	4,338	1,561
<b>35 - 39</b>	4,248	2,507	2,572	980
<b>40 - 44</b>	3,216	1,562	1,630	738
<b>45 - 49</b>	2,553	1,051	1,086	631
<b>50 - 54</b>	1,950	700	843	495
<b>55 - 59</b>	1,313	414	566	311
<b>60 - 64</b>	747	225	194	229
<b>&gt;64</b>	400	101	75	244
<b>Revision Stage</b>	7	6	0	0



STATE



AGE GROUP

## MYFUTUREJOBS : REGISTRATION OF JOBSEEKERS



# QUICK FACTS

INDICATOR	2021	2022	2023	AS OF 21 JUN 2024
<b>PULAU PINANG</b>	<b>48,890</b>	<b>29,004</b>	<b>30,836</b>	<b>12,711</b>
<b>EDUCATION</b>				
Primary	530	394	274	346
PMR/PT3	1,306	463	703	283
SPM (O-Level)	17,461	6,997	7,978	3,236
STPM (A-Level)	1,134	527	606	263
Diploma	6,659	4,698	4,904	1,987
Bachelor	8,667	5,200	5,553	2,025
Master	776	390	461	200
PhD	78	59	48	31
Revision Stage	12,279	10,276	10,309	4,340
<b>OKU</b>				
Total	170	145	299	189
Hearing impairment	58	21	29	12
Learning disability	17	20	49	18
Mental disability	18	37	59	25
Multiple disability	6	3	15	7
Physical disability	61	59	119	107
Speech impairment	3	2	11	5
Visual impairment	7	3	17	15

# QUICK FACTS



## MYFUTUREJOBS : PLACEMENT

INDICATOR	2021	2022	2023	AS OF 14 JUN 2024
<b>PULAU PINANG</b>	<b>29,385</b>	<b>21,588</b>	<b>18,028</b>	<b>5,379</b>
<b>STATE</b>				
Johor	39,725	33,037	19,853	7,339
Kedah	11,963	11,416	8,896	4,646
Kelantan	5,336	17,834	3,439	1,695
Melaka	9,084	8,104	6,314	2,481
Negeri Sembilan	9,095	7,226	6,834	2,084
Pahang	7,942	6,524	5,739	1,551
Perak	17,437	15,917	9,108	2,915
Perlis	1,126	1,047	910	403
Pulau Pinang	29,385	21,588	18,028	5,379
Sabah	6,977	19,297	11,957	2,987
Sarawak	13,336	15,443	11,568	2,890
Selangor	80,122	57,128	54,846	12,096
Terengganu	8,414	5,427	4,366	1,311
WP Kuala Lumpur	64,750	67,439	37,832	7,209
WP Labuan	452	687	598	85
WP Putrajaya	15,720	5,930	987	2,389
Revision Stage	0	0	13,639	5,860
<b>GENDER</b>				
Male	17,125	11,529	9,597	2,840
Female	12,260	10,059	8,431	2,538
Revision Stage	0	0	0	1
<b>OKU</b>				
Total Disabled Person	233	337	213	69
<b>AGE GROUP</b>				
<15	0	0	0	1
15 - 19	2,935	1,643	641	141
20 - 24	10,147	7,008	5,761	1,624
25 - 29	6,017	5,131	5,833	1,628
30 - 34	2,854	2,169	2,269	686
35 - 39	2,021	1,504	1,229	386
40 - 44	1,763	1,282	858	251
45 - 49	1,416	1,164	598	212
50 - 54	986	919	444	125
55 - 59	736	561	255	74
60 - 64	329	143	140	107
>64	181	64	0	144
<b>EDUCATION</b>				
Primary	446	358	448	221
PMR/PT3	1,021	605	442	142
SPM (O-Level)	11,217	7,283	6,817	2,227
STPM (A-Level)	791	449	319	105
Diploma	3,966	4,605	3,199	949
Bachelor	4,339	4,505	3,568	1,193
Master	302	227	253	100
PhD	17	15	26	2
Revision Stage	7,286	3,541	2,956	440



## MYFUTUREJOBS : PLACEMENT

INDICATOR	2021	2022	2023	AS OF 14 JUN 2024
<b>PULAU PINANG</b>	<b>29,385</b>	<b>21,588</b>	<b>18,028</b>	<b>5,379</b>
<RM1,500	3,989	2,032	2,124	256
RM1,500-RM1,999	13,833	7,123	7,252	2,598
RM2,000-RM2,999	5,798	4,978	4,923	1,037
RM3,000-RM3,999	2,051	1,368	1,696	325
RM4,000-RM4,999	865	1,073	697	126
RM5,000-RM5,999	451	290	606	52
RM6,000-RM7,999	388	132	87	39
RM8,000-RM9,999	185	85	47	29
RM10,000-RM12,999	148	29	50	16
RM13,000-RM15,999	40	7	28	10
>RM15,999	44	14	29	72
Revision Stage	1,593	4,457	489	819
<b>Managers</b>	<b>1,444</b>	<b>551</b>	<b>890</b>	<b>104</b>
<b>Professionals</b>	<b>4,316</b>	<b>2,830</b>	<b>2,703</b>	<b>691</b>
<b>Technicians</b>	<b>4,669</b>	<b>5,332</b>	<b>3,581</b>	<b>675</b>
<b>Clerical Support Workers</b>	<b>2,345</b>	<b>1,087</b>	<b>1,013</b>	<b>450</b>
<b>Service and Sales</b>	<b>4,199</b>	<b>2,408</b>	<b>3,020</b>	<b>320</b>
<b>Skilled Agriculture</b>	<b>143</b>	<b>6</b>	<b>75</b>	<b>2</b>
<b>Craft and related Trades Workers</b>	<b>828</b>	<b>399</b>	<b>478</b>	<b>74</b>
<b>Plant and Machine Operators</b>	<b>5,464</b>	<b>3,686</b>	<b>2,321</b>	<b>1,485</b>
<b>Elementary Occupations</b>	<b>3,275</b>	<b>426</b>	<b>2,343</b>	<b>226</b>
Revision Stage	2,702	4,863	1,604	1,352
<b>Agriculture, Forestry And Fishing</b>	<b>61</b>	<b>100</b>	<b>26</b>	<b>1</b>
<b>Mining &amp; Quarrying</b>	<b>7</b>	<b>7</b>	<b>13</b>	<b>3</b>
<b>Manufacturing</b>	<b>10,008</b>	<b>8,421</b>	<b>6,545</b>	<b>2,305</b>
<b>Electricity, Gas, Steam</b>	<b>171</b>	<b>67</b>	<b>117</b>	<b>12</b>
<b>Water Supply, Sewerage &amp; Waste</b>	<b>61</b>	<b>12</b>	<b>117</b>	<b>7</b>
<b>Construction</b>	<b>585</b>	<b>347</b>	<b>569</b>	<b>102</b>
<b>Wholesale And Retail</b>	<b>1,698</b>	<b>1,011</b>	<b>1,749</b>	<b>272</b>
<b>Transportation</b>	<b>1,355</b>	<b>1,006</b>	<b>648</b>	<b>183</b>
<b>Accommodation And F&amp;B</b>	<b>1,844</b>	<b>975</b>	<b>1,568</b>	<b>318</b>
<b>ICT</b>	<b>1,007</b>	<b>256</b>	<b>293</b>	<b>125</b>
<b>Financial And Insurance/Takaful</b>	<b>148</b>	<b>303</b>	<b>183</b>	<b>117</b>
<b>Real Estate</b>	<b>135</b>	<b>49</b>	<b>116</b>	<b>24</b>
<b>Professional &amp; Technical</b>	<b>2,360</b>	<b>1,690</b>	<b>1,159</b>	<b>132</b>
<b>Administrative And Support Service</b>	<b>3,333</b>	<b>1,614</b>	<b>1,152</b>	<b>158</b>
<b>Defence Compulsory Social Security</b>	<b>418</b>	<b>230</b>	<b>328</b>	<b>710</b>
<b>Education</b>	<b>439</b>	<b>277</b>	<b>326</b>	<b>73</b>
<b>Human Health And Social Work</b>	<b>485</b>	<b>292</b>	<b>512</b>	<b>65</b>
<b>Arts, Entertainment And Recreation</b>	<b>138</b>	<b>76</b>	<b>78</b>	<b>2</b>
<b>Other Service Activities</b>	<b>2,968</b>	<b>1,640</b>	<b>2,001</b>	<b>246</b>
<b>Activities Of Households</b>	<b>196</b>	<b>98</b>	<b>29</b>	<b>9</b>
<b>Activities Of Extraterritorial</b>	<b>71</b>	<b>98</b>	<b>12</b>	<b>0</b>
Revision Stage	1,897	3,019	487	515



**SALARY  
RANGE**



**OCCUPATION**



**INDUSTRY**



# QUICK FACTS



## LOSS OF EMPLOYMENT

INDICATOR	2021	2022	2023	AS OF 21 JUN 2024
<b>PULAU PINANG</b>	<b>3,529</b>	<b>2,112</b>	<b>5,844</b>	<b>3,577</b>
<b>Johor</b>	5,145	3,199	5,099	2,253
<b>Kedah</b>	2,932	1,189	1,750	1,027
<b>Kelantan</b>	374	666	560	336
<b>Melaka</b>	987	543	1,806	559
<b>Negeri Sembilan</b>	1,079	632	1,432	594
<b>Pahang</b>	861	659	1,066	396
<b>Perak</b>	2,675	1,664	1,647	1,032
<b>Perlis</b>	146	40	140	106
<b>Pulau Pinang</b>	3,529	2,112	5,844	3,577
<b>Sabah</b>	2,934	1,299	1,420	457
<b>Sarawak</b>	1,982	1,065	2,410	1,586
<b>Selangor</b>	21,198	10,546	14,763	6,927
<b>Terengganu</b>	704	817	502	408
<b>WP Kuala Lumpur</b>	16,488	9,766	11,116	5,705
<b>WP Labuan</b>	220	110	123	61
<b>WP Putrajaya</b>	106	75	304	49
<b>Revision Stage</b>	0	6	0	11
<b>STATE</b>				
<b>Male</b>	1,762	1,230	3,002	2,143
<b>Female</b>	1,767	882	2,842	1,434
<b>GENDER</b>				
<b>Primary</b>	95	50	252	153
<b>PMR/PT3</b>	286	127	337	179
<b>SPM (O-Level)</b>	1,402	799	2,347	1,564
<b>STPM (A-Level)</b>	101	83	164	58
<b>Diploma</b>	819	576	1,455	1,002
<b>Bachelor</b>	610	363	1,095	575
<b>Master</b>	95	50	179	42
<b>PhD</b>	6	1	15	4
<b>Revision Stage</b>	115	63	0	0
<b>EDUCATION</b>				
<b>&lt;RM1,500</b>	691	177	417	123
<b>RM1,500-RM1,999</b>	627	383	1,243	377
<b>RM2,000-RM2,999</b>	848	662	1,790	1,222
<b>RM3,000-RM3,999</b>	515	379	761	707
<b>RM4,000-RM4,999</b>	290	171	416	401
<b>RM5,000-RM5,999</b>	150	99	280	262
<b>RM6,000-RM7,999</b>	149	77	285	154
<b>RM8,000-RM9,999</b>	77	53	130	60
<b>RM10,000-RM12,999</b>	59	33	201	61
<b>RM13,000-RM15,999</b>	28	22	95	39
<b>&gt;RM15,999</b>	57	42	180	70
<b>Revision Stage</b>	38	14	46	101
<b>SALARY RANGE</b>				



## LOSS OF EMPLOYMENT

INDICATOR	2021	2022	2023	AS OF 21 JUN 2024
<b>PULAU PINANG</b>	<b>3,529</b>	<b>2,112</b>	<b>5,844</b>	<b>3,577</b>
<b>OCCUPATION</b>				
Managers	448	235	545	187
Professionals	910	397	1,169	583
Technicians	728	556	1,181	844
Clerical Support Workers	324	135	248	100
Service and Sales	290	73	92	77
Skilled Agriculture	1	0	1	1
Craft & Related Trades Workers	31	50	94	56
Plant and Machine Operators	593	608	2,317	1,333
Elementary Occupations	196	52	182	390
Revision Stage	8	6	15	6
<b>INDUSTRY</b>				
Agriculture, Forestry And Fishing	20	3	6	8
Mining And Quarrying	28	0	2	0
Manufacturing	1,168	1,232	3,599	2,066
Electricity, Gas, Steam	3	2	1	0
Water Supply, Sewerage & Waste	4	4	8	4
Construction	137	36	155	59
Wholesale & Retail	553	267	423	166
Transportation	95	86	218	146
Accommodation And F&B	303	26	61	384
ICT	96	195	344	120
Financial And Insurance/Takaful	38	18	26	40
Real Estate	341	14	33	10
Professional & Technical	241	95	260	209
Administrative And Support Service	223	37	295	239
Defence Compulsory Social Security	2	22	53	5
Education	52	6	15	11
Human Health And Social Work	38	9	163	30
Arts, Entertainment And Recreation	95	2	0	8
Other Service Activities	91	52	150	72
Activities Of Households	0	6	21	0
Activities Of Extraterritorial	1	0	11	0
<b>REASON FOR LOSS OF EMPLOYMENT</b>				
Closure of Business / Division	1,043	402	772	466
Downsizing	289	416	784	1,095
Financial Difficulties	199	73	185	130
Performance-Based Dismissal	615	207	334	142
Voluntary Resignation	281	109	173	89
VSS / MSS / Early Retirement Package	594	763	3,017	1,389
Other Reasons	508	142	579	266