



MINISTRY OF HUMAN RESOURCES



PERKESO



TERENGGANU



QUICK FACTS

EMPLOYMENT INSURANCE SYSTEM

AS OF 30 AUGUST 2024



QUICK FACTS



EMPLOYMENT INSURANCE SYSTEM QUICK FACTS AS OF 30 AUGUST 2024

	2021	2022	2023	2024	TOTAL
Vacancy	41,192	41,250	19,778	11,849	114,069
Active Vacancies				1,738	
Jobseeker	32,857	20,067	20,181	13,928	87,033
Placement	8,414	5,427	4,366	2,752	20,959
Loss of Employment	704	817	502	499	2,522

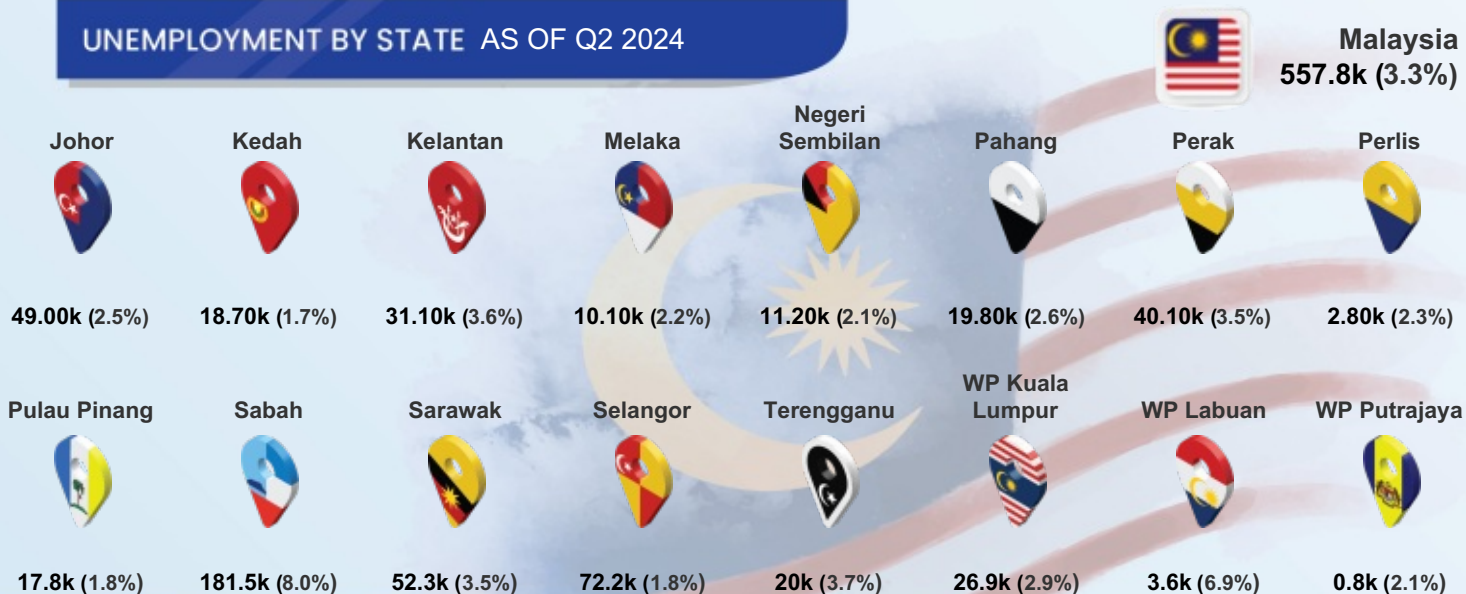
PERKESO'S ACTIVE CONTRIBUTORS JUNE 2024

**Active Employees
(ACT 4)**
136,520

**Self Employment
(ACT 789)**
18,987

**Active Employees
(ACT 800)**
97,333

UNEMPLOYMENT BY STATE AS OF Q2 2024



QUICK FACTS

MYFUTUREJOBS : VACANCIES

INDICATOR	2021	2022	2023	AS OF 30 AUG 2024
TERENGGANU	41,192	41,250	19,778	11,849
Johor	242,847	820,368	191,623	97,546
Kedah	61,802	134,183	47,744	22,655
Kelantan	53,821	48,311	22,108	10,314
Melaka	62,228	156,513	45,209	23,016
Negeri Sembilan	86,720	181,371	62,360	26,121
Pahang	70,978	148,733	65,222	19,039
Perak	129,613	193,404	68,196	32,974
Perlis	10,429	5,867	4,889	2,215
Pulau Pinang	209,659	421,388	148,163	69,591
Sabah	74,450	98,434	104,003	72,367
Sarawak	266,591	242,245	240,529	205,987
Selangor	739,038	1,462,665	577,246	219,027
Terengganu	41,192	41,250	19,778	11,849
WP Kuala Lumpur	406,719	782,680	397,306	179,803
WP Labuan	7,511	856	832	1,197
WP Putrajaya	16,979	15,150	7,712	7,864
STATE				
Primary	8,615	5,670	875	771
PMR/PT3	6,585	5,091	624	478
SPM (O-Level)	16,350	21,778	9,234	3,766
STPM (A-Level)	296	260	162	162
Diploma	6,384	5,007	5,934	4,715
Bachelor	2,936	3,437	2,935	1,951
Master	23	7	13	6
PhD	3	0	0	0
Revision Stage	0	0	1	0
EDUCATION				
<RM1,500	17,946	13,400	3,726	1,474
RM1,500-RM1,999	7,736	19,322	10,144	5,892
RM2,000-RM2,999	2,961	3,964	2,326	2,245
RM3,000-RM3,999	5,585	919	1,690	946
RM4,000-RM4,999	279	272	1,056	742
RM5,000-RM5,999	479	161	206	227
RM6,000-RM7,999	189	208	272	265
RM8,000-RM9,999	87	61	176	33
RM10,000-RM12,999	32	30	63	18
RM13,000-RM15,999	19	2	1	5
>RM15,999	5	2	18	2
SALARY RANGE				
Revision Stage	5,874	2,909	100	0



MYFUTUREJOBS : VACANCIES

INDICATOR	2021	2022	2023	AS OF 30 AUG 2024
TERENGGANU	41,192	41,250	19,778	11,849
Managers	1,512	2,155	1,118	610
Professionals	8,079	5,723	5,294	2,605
Technicians	6,270	2,815	3,401	2,673
Clerical Support Workers	1,540	1,800	1,622	2,045
Service & Sales	7,394	9,403	2,516	1,576
Skilled Agriculture	630	218	9	0
Craft & Related Trades Workers	3,446	1,988	2,172	1,324
Plant & Machine Operators	2,251	2,831	1,357	470
Elementary Occupations	10,070	14,317	2,289	546
Agriculture, Forestry And Fishing	314	2,778	210	82
Mining And Quarrying	371	560	1,065	1,119
Manufacturing	4,597	5,580	3,888	1,017
Electricity, Gas, Steam	352	107	353	146
Water Supply; Sewerage & Waste	35	185	53	21
Construction	5,547	8,523	3,035	501
Wholesale And Retail	4,638	4,739	2,063	2,575
Transportation	226	88	261	487
Accommodation And F&B	10,647	4,032	2,040	534
ICT	1,603	520	1,564	176
Financial And Insurance/Takaful	438	1,367	1,180	1,389
Real Estate	5	50	3	0
Professional & Technical	884	1,240	1,015	1,207
Administrative And Support Service	8,773	9,724	1,779	1,113
Defence Compulsory Social Security	1	1	34	209
Education	1,314	586	427	802
Human Health And Social Work	713	505	545	349
Arts, Entertainment And Recreation	22	6	57	22
Other Service Activities	711	658	190	76
Activities Of Households	1	1	16	11
Activities Of Extraterritorial	0	0	0	13



OCCUPATION



INDUSTRY



INDICATOR	2021	2022	2023	AS OF 30 AUG 2024
TERENGGANU	32,857	20,067	20,181	13,928
Johor	105,481	60,832	52,959	29,241
Kedah	53,915	35,935	40,614	25,863
Kelantan	42,694	27,388	29,762	19,568
Melaka	29,338	21,191	18,429	10,056
Negeri Sembilan	38,557	23,494	23,864	12,350
Pahang	39,888	22,108	23,387	15,067
Perak	64,725	39,974	38,861	24,154
Perlis	6,163	4,297	4,545	3,038
Pulau Pinang	48,890	29,004	30,836	16,649
Sabah	70,738	48,510	47,961	32,550
Sarawak	54,536	41,956	42,530	24,343
Selangor	213,149	122,107	108,404	51,518
Terengganu	32,857	20,067	20,181	13,928
WP Kuala Lumpur	81,668	45,279	38,977	18,105
WP Labuan	2,062	1,779	1,738	1,099
WP Putrajaya	2,859	2,051	2,994	1,344
Revision Stage	457	353	399	257
Male	16,264	9,870	9,735	6,783
Female	16,593	10,197	10,446	7,145
<15	0	6	5	11
15 - 19	43	706	758	1,119
20 - 24	9,068	7,052	7,614	6,012
25 - 29	11,821	6,466	6,235	2,670
30 - 34	5,508	2,920	2,700	1,556
35 - 39	2,747	1,544	1,549	1,068
40 - 44	1,503	631	676	678
45 - 49	866	360	339	377
50 - 54	658	206	171	220
55 - 59	432	119	98	106
60 - 64	166	43	27	59
>64	44	10	8	52
Revision Stage	1	4	1	0



STATE

GENDER

AGE
GROUP

MYFUTUREJOBS : REGISTRATION OF JOBSEEKERS




QUICK FACTS

INDICATOR	2021	2022	2023	AS OF 30 AUG 2024
TERENGGANU	32,857	20,067	20,181	13,928
EDUCATION				
Primary	1,207	130	137	432
PMR/PT3	493	258	279	321
SPM (O-Level)	11,240	3,142	3,539	2,960
STPM (A-Level)	636	503	375	391
Diploma	4,466	3,398	3,877	2,225
Bachelor	5,924	4,240	4,649	3,105
Master	323	142	174	81
PhD	26	12	20	14
Revision Stage	8,542	8,242	7,131	4,399
OKU				
Total	18	29	125	191
Hearing impairment	1	3	6	12
Learning disability	3	4	14	38
Mental disability	4	3	10	14
Multiple disability	0	0	4	5
Physical disability	8	16	73	109
Speech impairment	1	1	5	1
Visual impairment	1	2	13	12

QUICK FACTS

MYFUTUREJOBS : PLACEMENT

INDICATOR	2021	2022	2023	AS OF 23 AUG 2024
TERENGGANU	8,414	5,427	4,366	2,752
 Johor	39,725	33,037	19,853	12,489
Kedah	11,963	11,416	8,896	6,769
Kelantan	5,336	17,834	3,439	2,708
Melaka	9,084	8,104	6,314	4,047
Negeri Sembilan	9,095	7,226	6,834	3,728
Pahang	7,942	6,524	5,739	3,601
Perak	17,437	15,917	9,108	5,614
Perlis	1,126	1,047	910	691
Pulau Pinang	29,385	21,588	18,028	9,393
Sabah	6,977	19,297	11,957	5,683
Sarawak	13,336	15,443	11,568	5,804
Selangor	80,122	57,128	54,846	24,096
Terengganu	8,414	5,427	4,366	2,752
WP Kuala Lumpur	64,750	67,439	37,832	15,069
WP Labuan	452	687	598	283
WP Putrajaya	15,720	5,930	987	2,482
Revision Stage	0	0	13,639	9,568
GENDER				
Male	5,167	3,049	2,314	1,388
Female	3,247	2,378	2,052	1,364
OKU				
Total Disabled Person	43	66	47	34
AGE GROUP				
15 - 19	875	201	44	17
20 - 24	2,507	1,395	1,355	791
25 - 29	1,840	1,408	1,592	844
30 - 34	1,101	934	636	409
35 - 39	761	545	333	328
40 - 44	496	334	184	167
45 - 49	384	219	103	106
50 - 54	278	243	72	56
55 - 59	127	128	35	17
60 - 64	37	10	12	12
>64	8	10	0	5
EDUCATION				
Primary	230	158	56	57
PMR/PT3	187	198	69	49
SPM (O-Level)	4,663	1,924	1,086	605
STPM (A-Level)	123	157	89	73
Diploma	1,191	1,080	889	571
Bachelor	810	1,273	1,135	989
Master	40	37	45	84
PhD	2	5	4	1
Revision Stage	1,168	595	993	323



MYFUTUREJOBS : PLACEMENT

INDICATOR	2021	2022	2023	AS OF 23 AUG 2024
TERENGGANU	8,414	5,427	4,366	2,752
<RM1,500	2,755	829	926	291
RM1,500-RM1,999	3,424	1,683	2,098	1,715
RM2,000-RM2,999	1,388	484	771	245
RM3,000-RM3,999	285	172	220	88
RM4,000-RM4,999	90	251	139	150
RM5,000-RM5,999	58	25	156	20
RM6,000-RM7,999	38	11	10	17
RM8,000-RM9,999	30	4	0	1
RM10,000-RM12,999	24	3	3	0
RM13,000-RM15,999	10	0	0	1
>RM15,999	3	1	1	1
Revision Stage	309	1,964	42	223
Managers	393	130	221	55
Professionals	1,086	358	860	363
Technicians	963	727	735	515
Clerical Support Workers	476	195	275	479
Service and Sales	1,874	1,516	693	285
Skilled Agriculture	467	136	32	1
Craft and related Trades Workers	873	139	288	112
Plant and Machine Operators	286	218	252	109
Elementary Occupations	1,591	404	595	197
Revision Stage	405	1,604	415	636
Agriculture, Forestry And Fishing	639	248	46	21
Mining & Quarrying	40	27	50	17
Manufacturing	730	735	576	202
Electricity, Gas, Steam	102	30	44	5
Water Supply, Sewerage & Waste	8	29	40	3
Construction	1,637	452	580	325
Wholesale And Retail	568	835	387	164
Transportation	59	294	103	43
Accommodation And F&B	766	451	294	101
ICT	276	59	44	8
Financial And Insurance/Takaful	40	78	61	64
Real Estate	19	44	13	5
Professional & Technical	758	195	295	87
Administrative And Support Service	185	154	166	35
Defence Compulsory Social Security	63	124	283	1,036
Education	234	71	212	83
Human Health And Social Work	194	105	150	42
Arts, Entertainment And Recreation	36	13	43	5
Other Service Activities	1,745	647	894	253
Activities Of Households	23	39	5	0
Activities Of Extraterritorial	5	1	2	2
Revision Stage	287	796	78	251



SALARY RANGE



OCCUPATION



INDUSTRY

QUICK FACTS

LOSS OF EMPLOYMENT

INDICATOR	2021	2022	2023	AS OF 30 AUG 2024
TERENGGANU	704	817	502	499
Johor	5,145	3,199	5,099	3,007
Kedah	2,932	1,189	1,750	1,796
Kelantan	374	666	560	443
Melaka	987	543	1,806	676
Negeri Sembilan	1,079	632	1,432	867
Pahang	861	659	1,066	536
Perak	2,675	1,664	1,647	1,356
Perlis	146	40	140	182
Pulau Pinang	3,529	2,112	5,844	5,561
Sabah	2,934	1,299	1,420	668
Sarawak	1,982	1,065	2,410	2,009
Selangor	21,198	10,546	14,763	9,976
Terengganu	704	817	502	499
WP Kuala Lumpur	16,488	9,766	11,116	8,191
WP Labuan	220	110	123	83
WP Putrajaya	106	75	304	78
Revision Stage	0	6	0	18
STATE				
Male	442	647	309	266
Female	262	170	193	233
GENDER				
Primary	29	20	19	38
PMR/PT3	65	32	24	26
SPM (O-Level)	287	384	177	194
STPM (A-Level)	15	11	13	13
Diploma	171	253	143	123
Bachelor	101	90	121	103
Master	9	5	5	2
PhD	0	1	0	0
Revision Stage	27	21	0	0
EDUCATION				
<RM1,500	287	166	96	114
RM1,500-RM1,999	86	105	168	172
RM2,000-RM2,999	104	215	94	121
RM3,000-RM3,999	60	138	32	39
RM4,000-RM4,999	30	70	24	22
RM5,000-RM5,999	20	41	27	15
RM6,000-RM7,999	25	40	22	7
RM8,000-RM9,999	19	9	12	4
RM10,000-RM12,999	13	18	12	1
RM13,000-RM15,999	3	6	3	0
>RM15,999	6	4	4	0
Revision Stage	51	5	8	4
SALARY RANGE				



LOSS OF EMPLOYMENT

INDICATOR	2021	2022	2023	AS OF 30 AUG 2024
TERENGGANU	704	817	502	499
OCCUPATION				
Managers	70	60	62	34
Professionals	112	107	84	70
Technicians	124	216	108	110
Clerical Support Workers	60	72	39	59
Service and Sales	98	36	32	44
Craft & Related Trades Workers	31	96	20	41
Plant and Machine Operators	76	176	49	38
Elementary Occupations	127	51	108	101
Revision Stage	6	3	0	2
INDUSTRY				
Agriculture, Forestry And Fishing	2	1	11	26
Mining And Quarrying	27	20	12	0
Manufacturing	154	350	104	162
Electricity, Gas, Steam	6	0	0	0
Water Supply, Sewerage & Waste	0	9	0	3
Construction	106	55	100	66
Wholesale & Retail	134	92	83	63
Transportation	17	11	4	47
Accommodation And F&B	29	20	19	9
ICT	3	0	7	5
Financial And Insurance/Takaful	7	1	1	1
Real Estate	2	0	1	3
Professional & Technical	64	79	28	21
Administrative And Support Service	66	92	22	43
Defence Compulsory Social Security	3	9	24	3
Education	26	18	6	13
Human Health And Social Work	13	6	29	20
Arts, Entertainment And Recreation	2	0	2	0
Other Service Activities	43	54	46	14
Activities Of Households	0	0	3	0
REASON FOR LOSS OF EMPLOYMENT				
Closure of Business / Division	71	238	80	192
Downsizing	174	310	118	78
Financial Difficulties	79	57	92	67
Performance-Based Dismissal	64	40	54	48
Voluntary Resignation	57	41	31	24
VSS / MSS / Early Retirement Package	39	54	24	35
Other Reasons	220	77	103	55