



MINISTRY OF HUMAN RESOURCES



PERKESO



TERENGGANU



# QUICK FACTS

EMPLOYMENT INSURANCE SYSTEM

AS OF 4 OCTOBER 2024





# QUICK FACTS



## EMPLOYMENT INSURANCE SYSTEM QUICK FACTS AS OF 4 OCTOBER 2024

	2021	2022	2023	2024	TOTAL
Vacancy	41,192	41,250	19,778	13,717	115,937
Active Vacancies				1,408	
Jobseeker	32,857	20,067	20,181	15,653	88,758
Placement	8,414	5,427	4,366	3,270	21,477
Loss of Employment	704	817	502	536	2,559

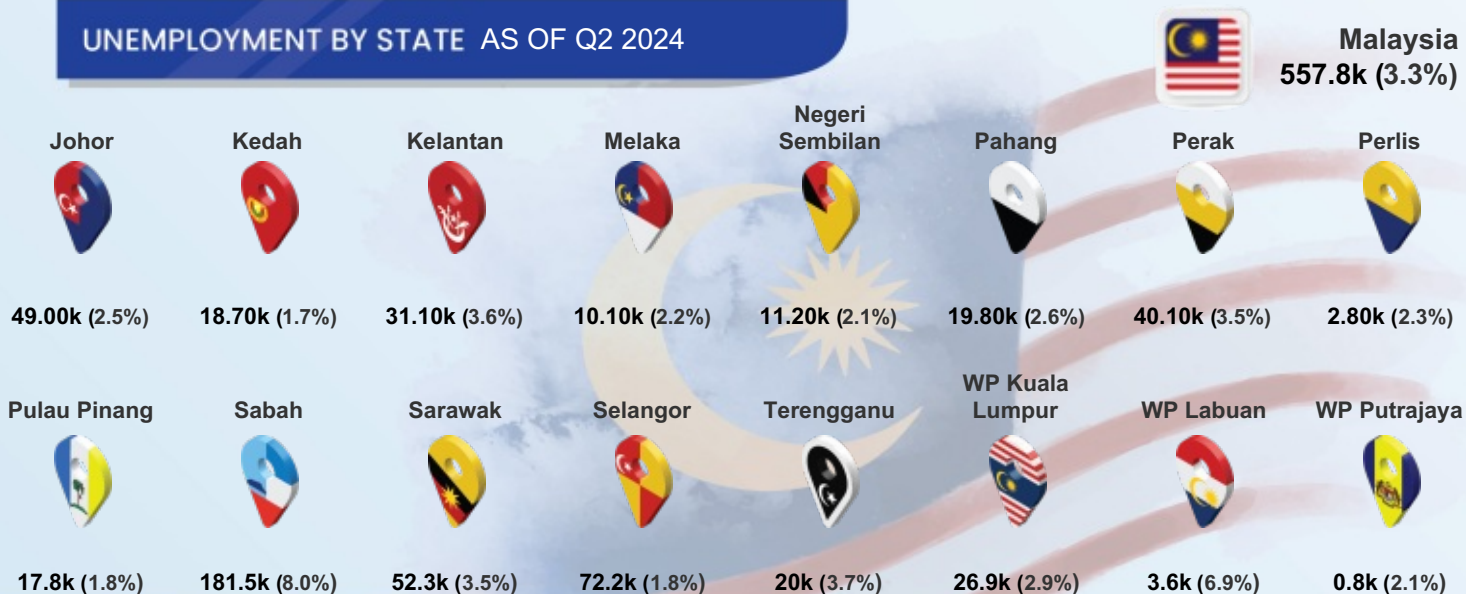
## PERKESO'S ACTIVE CONTRIBUTORS JULY 2024

**Active Employees  
(ACT 4)**  
136,520

**Self Employment  
(ACT 789)**  
18,987

**Active Employees  
(ACT 800)**  
97,333

## UNEMPLOYMENT BY STATE AS OF Q2 2024



# QUICK FACTS

## MYFUTUREJOBS : VACANCIES

INDICATOR	2021	2022	2023	AS OF 4 OCT 2024
<b>TERENGGANU</b>	<b>41,192</b>	<b>41,250</b>	<b>19,778</b>	<b>13,717</b>
<b>Johor</b>	242,847	820,368	191,623	111,165
<b>Kedah</b>	61,802	134,183	47,744	26,296
<b>Kelantan</b>	53,821	48,311	22,108	11,980
<b>Melaka</b>	62,228	156,513	45,209	26,476
<b>Negeri Sembilan</b>	86,720	181,371	62,360	29,129
<b>Pahang</b>	70,978	148,733	65,222	22,803
<b>Perak</b>	129,613	193,404	68,196	38,264
<b>Perlis</b>	10,429	5,867	4,889	2,534
<b>Pulau Pinang</b>	209,659	421,388	148,163	80,351
<b>Sabah</b>	74,450	98,434	104,003	83,256
<b>Sarawak</b>	266,591	242,245	240,529	235,751
<b>Selangor</b>	739,038	1,462,665	577,246	256,990
<b>Terengganu</b>	41,192	41,250	19,778	13,717
<b>WP Kuala Lumpur</b>	406,719	782,680	397,306	200,867
<b>WP Labuan</b>	7,511	856	832	1,353
<b>WP Putrajaya</b>	16,979	15,150	7,712	8,790
<b>STATE</b>				
<b>Primary</b>	8,615	5,670	875	813
<b>PMR/PT3</b>	6,585	5,091	624	597
<b>SPM (O-Level)</b>	16,350	21,778	9,234	4,167
<b>STPM (A-Level)</b>	296	260	162	181
<b>Diploma</b>	6,384	5,007	5,934	5,691
<b>Bachelor</b>	2,936	3,437	2,935	2,254
<b>Master</b>	23	7	13	7
<b>PhD</b>	3	0	0	7
<b>Revision Stage</b>	0	0	1	0
<b>EDUCATION</b>				
<b>&lt;RM1,500</b>	17,946	13,400	3,726	2,103
<b>RM1,500-RM1,999</b>	7,736	19,322	10,144	6,529
<b>RM2,000-RM2,999</b>	2,961	3,964	2,326	2,605
<b>RM3,000-RM3,999</b>	5,585	919	1,690	1,059
<b>RM4,000-RM4,999</b>	279	272	1,056	820
<b>RM5,000-RM5,999</b>	479	161	206	256
<b>RM6,000-RM7,999</b>	189	208	272	281
<b>RM8,000-RM9,999</b>	87	61	176	39
<b>RM10,000-RM12,999</b>	32	30	63	18
<b>RM13,000-RM15,999</b>	19	2	1	5
<b>&gt;RM15,999</b>	5	2	18	2
<b>Revision Stage</b>	5,874	2,909	100	0
<b>SALARY RANGE</b>				



## MYFUTUREJOBS : VACANCIES

INDICATOR	2021	2022	2023	AS OF 4 OCT 2024
<b>TERENGGANU</b>	<b>41,192</b>	<b>41,250</b>	<b>19,778</b>	<b>13,717</b>
<b>OCCUPATION</b>				
Managers	1,512	2,155	1,118	775
Professionals	8,079	5,723	5,294	3,352
Technicians	6,270	2,815	3,401	2,938
Clerical Support Workers	1,540	1,800	1,622	2,249
Service & Sales	7,394	9,403	2,516	1,799
Skilled Agriculture	630	218	9	0
Craft & Related Trades Workers	3,446	1,988	2,172	1,413
Plant & Machine Operators	2,251	2,831	1,357	532
Elementary Occupations	10,070	14,317	2,289	659
<b>INDUSTRY</b>				
Agriculture, Forestry And Fishing	314	2,778	210	84
Mining And Quarrying	371	560	1,065	1,147
Manufacturing	4,597	5,580	3,888	1,165
Electricity, Gas, Steam	352	107	353	156
Water Supply; Sewerage & Waste	35	185	53	24
Construction	5,547	8,523	3,035	567
Wholesale And Retail	4,638	4,739	2,063	2,856
Transportation	226	88	261	611
Accommodation And F&B	10,647	4,032	2,040	618
ICT	1,603	520	1,564	220
Financial And Insurance/Takaful	438	1,367	1,180	1,566
Real Estate	5	50	3	0
Professional & Technical	884	1,240	1,015	1,359
Administrative And Support Service	8,773	9,724	1,779	1,303
Defence Compulsory Social Security	1	1	34	221
Education	1,314	586	427	1,264
Human Health And Social Work	713	505	545	391
Arts, Entertainment And Recreation	22	6	57	27
Other Service Activities	711	658	190	85
Activities Of Households	1	1	16	11
Activities Of Extraterritorial	0	0	0	42





INDICATOR	2021	2022	2023	AS OF 4 OCT 2024
TERENGGANU	32,857	20,067	20,181	15,653
<b>Johor</b>	105,481	60,832	52,959	33,825
<b>Kedah</b>	53,915	35,935	40,614	29,332
<b>Kelantan</b>	42,694	27,388	29,762	21,528
<b>Melaka</b>	29,338	21,191	18,429	12,180
<b>Negeri Sembilan</b>	38,557	23,494	23,864	14,436
<b>Pahang</b>	39,888	22,108	23,387	16,726
<b>Perak</b>	64,725	39,974	38,861	27,505
<b>Perlis</b>	6,163	4,297	4,545	3,363
<b>Pulau Pinang</b>	48,890	29,004	30,836	19,113
<b>Sabah</b>	70,738	48,510	47,961	35,984
<b>Sarawak</b>	54,536	41,956	42,530	27,558
<b>Selangor</b>	213,149	122,107	108,404	59,067
<b>Terengganu</b>	32,857	20,067	20,181	15,653
<b>WP Kuala Lumpur</b>	81,668	45,279	38,977	20,624
<b>WP Labuan</b>	2,062	1,779	1,738	1,218
<b>WP Putrajaya</b>	2,859	2,051	2,994	1,524
<b>Revision Stage</b>	457	353	399	300
<b>Male</b>	16,264	9,870	9,735	7,607
<b>Female</b>	16,593	10,197	10,446	8,046
<b>&lt;15</b>	0	6	5	13
<b>15 - 19</b>	43	706	758	1,451
<b>20 - 24</b>	9,068	7,052	7,614	6,766
<b>25 - 29</b>	11,821	6,466	6,235	2,907
<b>30 - 34</b>	5,508	2,920	2,700	1,701
<b>35 - 39</b>	2,747	1,544	1,549	1,169
<b>40 - 44</b>	1,503	631	676	753
<b>45 - 49</b>	866	360	339	418
<b>50 - 54</b>	658	206	171	238
<b>55 - 59</b>	432	119	98	119
<b>60 - 64</b>	166	43	27	64
<b>&gt;64</b>	44	10	8	54
<b>Revision Stage</b>	1	4	1	0



## STATE



## AGE GROUP

## MYFUTUREJOBS : REGISTRATION OF JOBSEEKERS



# QUICK FACTS

INDICATOR	2021	2022	2023	AS OF 4 OCT 2024
TERENGGANU	32,857	20,067	20,181	15,653
<b>EDUCATION</b>				
Primary	1,207	130	137	454
PMR/PT3	493	258	279	356
SPM (O-Level)	11,240	3,142	3,539	3,377
STPM (A-Level)	636	503	375	483
Diploma	4,466	3,398	3,877	2,479
Bachelor	5,924	4,240	4,649	3,503
Master	323	142	174	91
PhD	26	12	20	14
Revision Stage	8,542	8,242	7,131	4,896
<b>OKU</b>				
Total	18	29	125	223
Hearing impairment	1	3	6	16
Learning disability	3	4	14	45
Mental disability	4	3	10	16
Multiple disability	0	0	4	5
Physical disability	8	16	73	125
Speech impairment	1	1	5	2
Visual impairment	1	2	13	14

# QUICK FACTS



## MYFUTUREJOBS : PLACEMENT

INDICATOR	2021	2022	2023	AS OF 20 SEP 2024
<b>TERENGGANU</b>	<b>8,414</b>	<b>5,427</b>	<b>4,366</b>	<b>3,270</b>
<b>STATE</b>				
Johor	39,725	33,037	19,853	15,026
Kedah	11,963	11,416	8,896	7,655
Kelantan	5,336	17,834	3,439	3,187
Melaka	9,084	8,104	6,314	4,963
Negeri Sembilan	9,095	7,226	6,834	4,930
Pahang	7,942	6,524	5,739	5,134
Perak	17,437	15,917	9,108	7,376
Perlis	1,126	1,047	910	869
Pulau Pinang	29,385	21,588	18,028	11,706
Sabah	6,977	19,297	11,957	7,448
Sarawak	13,336	15,443	11,568	7,719
Selangor	80,122	57,128	54,846	31,244
Terengganu	8,414	5,427	4,366	3,270
WP Kuala Lumpur	64,750	67,439	37,832	19,200
WP Labuan	452	687	598	340
WP Putrajaya	15,720	5,930	987	2,538
Revision Stage	0	0	13,639	8,999
<b>GENDER</b>				
Male	5,167	3,049	2,314	1,738
Female	3,247	2,378	2,052	1,532
<b>OKU</b>				
Total Disabled Person	43	66	47	50
<b>AGE GROUP</b>				
15 - 19	875	201	44	26
20 - 24	2,507	1,395	1,355	1,016
25 - 29	1,840	1,408	1,592	872
30 - 34	1,101	934	636	418
35 - 39	761	545	333	441
40 - 44	496	334	184	221
45 - 49	384	219	103	151
50 - 54	278	243	72	78
55 - 59	127	128	35	25
60 - 64	37	10	12	16
>64	8	10	0	5
Revision Stage	0	0	0	1
<b>EDUCATION</b>				
Primary	230	158	56	69
PMR/PT3	187	198	69	67
SPM (O-Level)	4,663	1,924	1,086	788
STPM (A-Level)	123	157	89	84
Diploma	1,191	1,080	889	694
Bachelor	810	1,273	1,135	1,077
Master	40	37	45	93
PhD	2	5	4	1
Revision Stage	1,168	595	993	397



## MYFUTUREJOBS : PLACEMENT

INDICATOR	2021	2022	2023	AS OF 20 SEP 2024
<b>TERENGGANU</b>	<b>8,414</b>	<b>5,427</b>	<b>4,366</b>	<b>3,270</b>
<b>&lt;RM1,500</b>	<b>2,755</b>	<b>829</b>	<b>926</b>	<b>333</b>
<b>RM1,500-RM1,999</b>	<b>3,424</b>	<b>1,683</b>	<b>2,098</b>	<b>1,811</b>
<b>RM2,000-RM2,999</b>	<b>1,388</b>	<b>484</b>	<b>771</b>	<b>343</b>
<b>RM3,000-RM3,999</b>	<b>285</b>	<b>172</b>	<b>220</b>	<b>144</b>
<b>RM4,000-RM4,999</b>	<b>90</b>	<b>251</b>	<b>139</b>	<b>159</b>
<b>RM5,000-RM5,999</b>	<b>58</b>	<b>25</b>	<b>156</b>	<b>237</b>
<b>RM6,000-RM7,999</b>	<b>38</b>	<b>11</b>	<b>10</b>	<b>17</b>
<b>RM8,000-RM9,999</b>	<b>30</b>	<b>4</b>	<b>0</b>	<b>2</b>
<b>RM10,000-RM12,999</b>	<b>24</b>	<b>3</b>	<b>3</b>	<b>2</b>
<b>RM13,000-RM15,999</b>	<b>10</b>	<b>0</b>	<b>0</b>	<b>1</b>
<b>&gt;RM15,999</b>	<b>3</b>	<b>1</b>	<b>1</b>	<b>4</b>
<b>Revision Stage</b>	<b>309</b>	<b>1,964</b>	<b>42</b>	<b>217</b>
<b>Managers</b>	<b>393</b>	<b>130</b>	<b>221</b>	<b>113</b>
<b>Professionals</b>	<b>1,086</b>	<b>358</b>	<b>860</b>	<b>467</b>
<b>Technicians</b>	<b>963</b>	<b>727</b>	<b>735</b>	<b>593</b>
<b>Clerical Support Workers</b>	<b>476</b>	<b>195</b>	<b>275</b>	<b>499</b>
<b>Service and Sales</b>	<b>1,874</b>	<b>1,516</b>	<b>693</b>	<b>326</b>
<b>Skilled Agriculture</b>	<b>467</b>	<b>136</b>	<b>32</b>	<b>2</b>
<b>Craft and related Trades Workers</b>	<b>873</b>	<b>139</b>	<b>288</b>	<b>158</b>
<b>Plant and Machine Operators</b>	<b>286</b>	<b>218</b>	<b>252</b>	<b>127</b>
<b>Elementary Occupations</b>	<b>1,591</b>	<b>404</b>	<b>595</b>	<b>242</b>
<b>Revision Stage</b>	<b>405</b>	<b>1,604</b>	<b>415</b>	<b>743</b>
<b>Agriculture, Forestry And Fishing</b>	<b>639</b>	<b>248</b>	<b>46</b>	<b>36</b>
<b>Mining &amp; Quarrying</b>	<b>40</b>	<b>27</b>	<b>50</b>	<b>26</b>
<b>Manufacturing</b>	<b>730</b>	<b>735</b>	<b>576</b>	<b>269</b>
<b>Electricity, Gas, Steam</b>	<b>102</b>	<b>30</b>	<b>44</b>	<b>6</b>
<b>Water Supply, Sewerage &amp; Waste</b>	<b>8</b>	<b>29</b>	<b>40</b>	<b>5</b>
<b>Construction</b>	<b>1,637</b>	<b>452</b>	<b>580</b>	<b>388</b>
<b>Wholesale And Retail</b>	<b>568</b>	<b>835</b>	<b>387</b>	<b>239</b>
<b>Transportation</b>	<b>59</b>	<b>294</b>	<b>103</b>	<b>65</b>
<b>Accommodation And F&amp;B</b>	<b>766</b>	<b>451</b>	<b>294</b>	<b>140</b>
<b>ICT</b>	<b>276</b>	<b>59</b>	<b>44</b>	<b>19</b>
<b>Financial And Insurance/Takaful</b>	<b>40</b>	<b>78</b>	<b>61</b>	<b>78</b>
<b>Real Estate</b>	<b>19</b>	<b>44</b>	<b>13</b>	<b>11</b>
<b>Professional &amp; Technical</b>	<b>758</b>	<b>195</b>	<b>295</b>	<b>170</b>
<b>Administrative And Support Service</b>	<b>185</b>	<b>154</b>	<b>166</b>	<b>85</b>
<b>Defence Compulsory Social Security</b>	<b>63</b>	<b>124</b>	<b>283</b>	<b>1,052</b>
<b>Education</b>	<b>234</b>	<b>71</b>	<b>212</b>	<b>101</b>
<b>Human Health And Social Work</b>	<b>194</b>	<b>105</b>	<b>150</b>	<b>59</b>
<b>Arts, Entertainment And Recreation</b>	<b>36</b>	<b>13</b>	<b>43</b>	<b>9</b>
<b>Other Service Activities</b>	<b>1,745</b>	<b>647</b>	<b>894</b>	<b>316</b>
<b>Activities Of Households</b>	<b>23</b>	<b>39</b>	<b>5</b>	<b>0</b>
<b>Activities Of Extraterritorial</b>	<b>5</b>	<b>1</b>	<b>2</b>	<b>3</b>
<b>Revision Stage</b>	<b>287</b>	<b>796</b>	<b>78</b>	<b>193</b>



### SALARY RANGE



### OCCUPATION



### INDUSTRY



# QUICK FACTS



## LOSS OF EMPLOYMENT

INDICATOR	2021	2022	2023	AS OF 4 OCT 2024
<b>TERENGGANU</b>	<b>704</b>	<b>817</b>	<b>502</b>	<b>536</b>
<b>Johor</b>	5,145	3,199	5,099	3,472
<b>Kedah</b>	2,932	1,189	1,750	2,029
<b>Kelantan</b>	374	666	560	500
<b>Melaka</b>	987	543	1,806	770
<b>Negeri Sembilan</b>	1,079	632	1,432	935
<b>Pahang</b>	861	659	1,066	717
<b>Perak</b>	2,675	1,664	1,647	1,488
<b>Perlis</b>	146	40	140	195
<b>Pulau Pinang</b>	3,529	2,112	5,844	7,827
<b>Sabah</b>	2,934	1,299	1,420	791
<b>Sarawak</b>	1,982	1,065	2,410	2,307
<b>Selangor</b>	21,198	10,546	14,763	11,601
<b>Terengganu</b>	704	817	502	536
<b>WP Kuala Lumpur</b>	16,488	9,766	11,116	9,265
<b>WP Labuan</b>	220	110	123	94
<b>WP Putrajaya</b>	106	75	304	84
<b>Revision Stage</b>	0	6	0	17
<b>STATE</b>				
<b>Male</b>	442	647	309	288
<b>Female</b>	262	170	193	248
<b>GENDER</b>				
<b>Primary</b>	29	20	19	41
<b>PMR/PT3</b>	65	32	24	30
<b>SPM (O-Level)</b>	287	384	177	209
<b>STPM (A-Level)</b>	15	11	13	14
<b>Diploma</b>	171	253	143	134
<b>Bachelor</b>	101	90	121	106
<b>Master</b>	9	5	5	2
<b>PhD</b>	0	1	0	0
<b>Revision Stage</b>	27	21	0	0
<b>EDUCATION</b>				
<b>&lt;RM1,500</b>	287	166	96	119
<b>RM1,500-RM1,999</b>	86	105	168	184
<b>RM2,000-RM2,999</b>	104	215	94	129
<b>RM3,000-RM3,999</b>	60	138	32	42
<b>RM4,000-RM4,999</b>	30	70	24	25
<b>RM5,000-RM5,999</b>	20	41	27	20
<b>RM6,000-RM7,999</b>	25	40	22	7
<b>RM8,000-RM9,999</b>	19	9	12	4
<b>RM10,000-RM12,999</b>	13	18	12	1
<b>RM13,000-RM15,999</b>	3	6	3	1
<b>&gt;RM15,999</b>	6	4	4	0
<b>Revision Stage</b>	51	5	8	4
<b>SALARY RANGE</b>				



## LOSS OF EMPLOYMENT

INDICATOR	2021	2022	2023	AS OF 4 OCT 2024
<b>TERENGGANU</b>	<b>704</b>	<b>817</b>	<b>502</b>	<b>536</b>
<b>OCCUPATION</b>				
Managers	70	60	62	36
Professionals	112	107	84	76
Technicians	124	216	108	120
Clerical Support Workers	60	72	39	62
Service and Sales	98	36	32	46
Craft & Related Trades Workers	31	96	20	45
Plant and Machine Operators	76	176	49	40
Elementary Occupations	127	51	108	109
Revision Stage	6	3	0	2
<b>INDUSTRY</b>				
Agriculture, Forestry And Fishing	2	1	11	26
Mining And Quarrying	27	20	12	0
Manufacturing	154	350	104	162
Electricity, Gas, Steam	6	0	0	0
Water Supply, Sewerage & Waste	0	9	0	3
Construction	106	55	100	79
Wholesale & Retail	134	92	83	71
Transportation	17	11	4	49
Accommodation And F&B	29	20	19	9
ICT	3	0	7	6
Financial And Insurance/Takaful	7	1	1	2
Real Estate	2	0	1	3
Professional & Technical	64	79	28	22
Administrative And Support Service	66	92	22	50
Defence Compulsory Social Security	3	9	24	3
Education	26	18	6	14
Human Health And Social Work	13	6	29	21
Arts, Entertainment And Recreation	2	0	2	0
Other Service Activities	43	54	46	16
Activities Of Households	0	0	3	0
<b>REASON FOR LOSS OF EMPLOYMENT</b>				
Closure of Business / Division	71	238	80	197
Downsizing	174	310	118	86
Financial Difficulties	79	57	92	71
Performance-Based Dismissal	64	40	54	55
Voluntary Resignation	57	41	31	25
VSS / MSS / Early Retirement Package	39	54	24	35
Other Reasons	220	77	103	67