



MINISTRY OF HUMAN RESOURCES



PERKESO



# PAHANG QUICK FACTS

EMPLOYMENT INSURANCE SYSTEM

AS OF 4 OCTOBER 2024



# QUICK FACTS



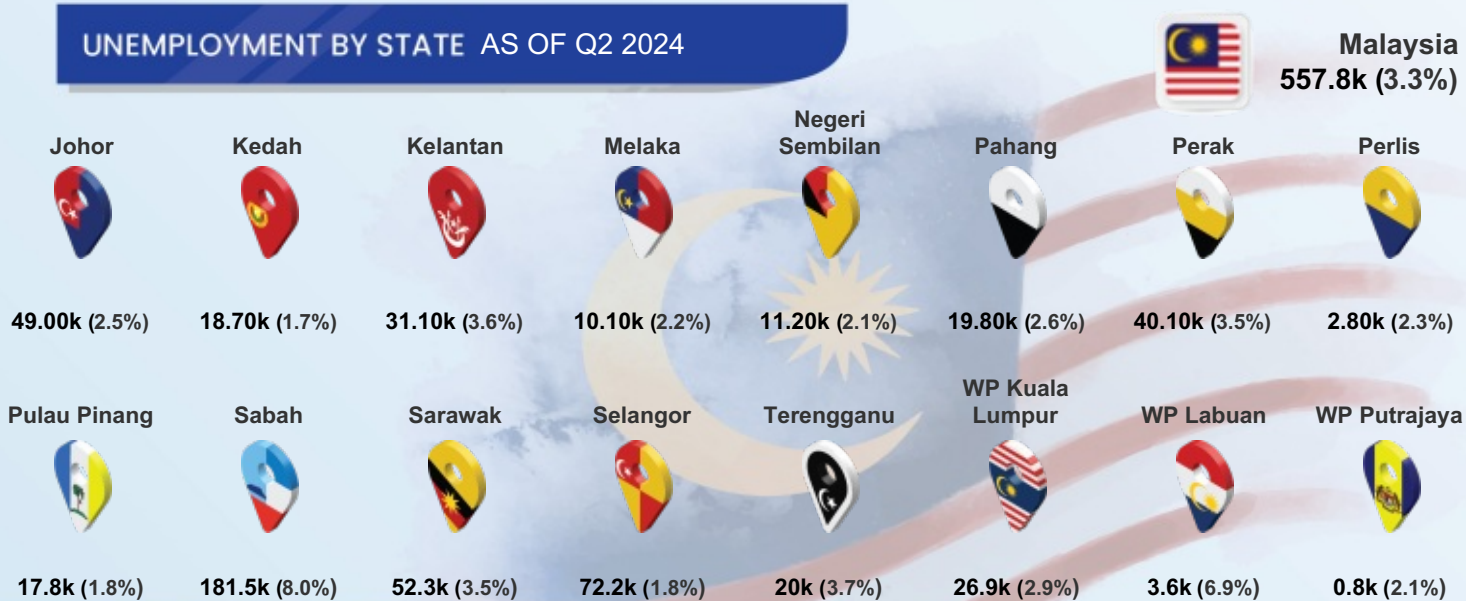
## EMPLOYMENT INSURANCE SYSTEM QUICK FACTS AS OF 4 OCTOBER 2024

	2021	2022	2023	2024	TOTAL
Vacancy	70,978	148,733	65,222	22,803	307,736
Active Vacancies				3,519	
Jobseeker	39,888	22,108	23,387	16,726	102,109
Placement	7,942	6,524	5,739	5,134	25,339
Loss of Employment	861	659	1,066	717	3,303

## PERKESO'S ACTIVE CONTRIBUTORS JULY 2024



## UNEMPLOYMENT BY STATE AS OF Q2 2024



# QUICK FACTS

## MYFUTUREJOBS : VACANCIES

INDICATOR	2021	2022	2023	AS OF 4 OCT 2024
<b>PAHANG</b>	<b>70,978</b>	<b>148,733</b>	<b>65,222</b>	<b>22,803</b>
<b>Johor</b>	242,847	820,368	191,623	111,165
<b>Kedah</b>	61,802	134,183	47,744	26,296
<b>Kelantan</b>	53,821	48,311	22,108	11,980
<b>Melaka</b>	62,228	156,513	45,209	26,476
<b>Negeri Sembilan</b>	86,720	181,371	62,360	29,129
<b>Pahang</b>	70,978	148,733	65,222	22,803
<b>Perak</b>	129,613	193,404	68,196	38,264
<b>Perlis</b>	10,429	5,867	4,889	2,534
<b>Pulau Pinang</b>	209,659	421,388	148,163	80,351
<b>Sabah</b>	74,450	98,434	104,003	83,256
<b>Sarawak</b>	266,591	242,245	240,529	235,751
<b>Selangor</b>	739,038	1,462,665	577,246	256,990
<b>Terengganu</b>	41,192	41,250	19,778	13,717
<b>WP Kuala Lumpur</b>	406,719	782,680	397,306	200,867
<b>WP Labuan</b>	7,511	856	832	1,353
<b>WP Putrajaya</b>	16,979	15,150	7,712	8,790
<b>Primary</b>	12,184	49,720	10,203	649
<b>PMR/PT3</b>	7,624	28,573	4,035	1,837
<b>SPM (O-Level)</b>	39,718	52,709	36,566	10,876
<b>STPM (A-Level)</b>	684	1,882	310	216
<b>Diploma</b>	7,843	13,014	11,388	5,865
<b>Bachelor</b>	2,857	2,749	2,666	3,304
<b>Master</b>	50	63	50	43
<b>PhD</b>	18	23	4	13
<b>&lt;RM1,500</b>	29,313	55,773	5,827	784
<b>RM1,500-RM1,999</b>	12,881	63,218	38,780	8,985
<b>RM2,000-RM2,999</b>	15,315	17,962	16,948	10,091
<b>RM3,000-RM3,999</b>	8,241	2,656	2,276	1,507
<b>RM4,000-RM4,999</b>	977	572	362	279
<b>RM5,000-RM5,999</b>	676	921	500	702
<b>RM6,000-RM7,999</b>	206	243	218	290
<b>RM8,000-RM9,999</b>	143	88	224	130
<b>RM10,000-RM12,999</b>	25	19	56	21
<b>RM13,000-RM15,999</b>	11	19	12	9
<b>&gt;RM15,999</b>	5	2	19	5
<b>Revision Stage</b>	3,185	7,260	0	0



### STATE





### EDUCATION



### SALARY RANGE

## MYFUTUREJOBS : VACANCIES

INDICATOR	2021	2022	2023	AS OF 4 OCT 2024
<b>PAHANG</b>	<b>70,978</b>	<b>148,733</b>	<b>65,222</b>	<b>22,803</b>
 <b>OCCUPATION</b>				
Managers	2,211	2,525	2,102	1,942
Professionals	15,920	20,867	7,739	3,740
Technicians	7,575	12,056	8,605	3,455
Clerical Support Workers	3,316	3,216	3,134	3,120
Service & Sales	14,582	14,929	6,998	3,108
Skilled Agriculture	1,747	8,268	8,892	107
Craft & Related Trades Workers	2,854	6,743	3,415	2,058
Plant & Machine Operators	4,798	8,984	6,246	2,670
Elementary Occupations	17,975	71,145	18,091	2,603
 <b>INDUSTRY</b>				
Agriculture, Forestry And Fishing	6,616	47,143	13,620	1,008
Mining And Quarrying	488	1,204	365	383
Manufacturing	10,631	32,501	17,377	6,758
Electricity, Gas, Steam	231	171	195	225
Water Supply; Sewerage & Waste	203	148	1,027	23
Construction	2,178	13,375	3,285	947
Wholesale And Retail	6,654	11,310	5,688	3,705
Transportation	773	619	799	1,378
Accommodation And F&B	21,999	19,334	7,609	1,949
ICT	2,214	1,038	2,565	207
Financial And Insurance/Takaful	454	259	830	570
Real Estate	424	2,725	122	56
Professional & Technical	6,014	2,420	1,015	655
Administrative And Support Service	3,089	5,642	2,715	814
Defence Compulsory Social Security	9	0	22	918
Education	2,734	460	515	756
Human Health And Social Work	1,033	978	567	559
Arts, Entertainment And Recreation	407	1,211	4,415	1,594
Other Service Activities	4,790	7,902	2,479	223
Activities Of Households	36	287	12	3
Activities Of Extraterritorial	1	6	0	72

# QUICK FACTS

## MYFUTUREJOBS : REGISTRATION OF JOBSEEKERS

INDICATOR	2021	2022	2023	AS OF 4 OCT 2024
PAHANG	39,888	22,108	23,387	16,726
<b>Johor</b>	105,481	60,832	52,959	33,825
<b>Kedah</b>	53,915	35,935	40,614	29,332
<b>Kelantan</b>	42,694	27,388	29,762	21,528
<b>Melaka</b>	29,338	21,191	18,429	12,180
<b>Negeri Sembilan</b>	38,557	23,494	23,864	14,436
<b>Pahang</b>	39,888	22,108	23,387	16,726
<b>Perak</b>	64,725	39,974	38,861	27,505
<b>Perlis</b>	6,163	4,297	4,545	3,363
<b>Pulau Pinang</b>	48,890	29,004	30,836	19,113
<b>Sabah</b>	70,738	48,510	47,961	35,984
<b>Sarawak</b>	54,536	41,956	42,530	27,558
<b>Selangor</b>	213,149	122,107	108,404	59,067
<b>Terengganu</b>	32,857	20,067	20,181	15,653
<b>WP Kuala Lumpur</b>	81,668	45,279	38,977	20,624
<b>WP Labuan</b>	2,062	1,779	1,738	1,218
<b>WP Putrajaya</b>	2,859	2,051	2,994	1,524
<b>Revision Stage</b>	457	353	399	300
<b>Male</b>	19,052	10,904	11,125	8,425
<b>Female</b>	20,836	11,204	12,262	8,301
<b>&lt;15</b>	4	5	2	1
<b>15 - 19</b>	105	702	754	1,609
<b>20 - 24</b>	11,444	7,609	8,593	6,948
<b>25 - 29</b>	13,753	6,711	6,645	3,046
<b>30 - 34</b>	6,291	3,348	3,160	1,830
<b>35 - 39</b>	3,127	1,779	1,877	1,281
<b>40 - 44</b>	1,960	881	1,011	782
<b>45 - 49</b>	1,241	460	586	454
<b>50 - 54</b>	868	285	440	294
<b>55 - 59</b>	588	215	209	194
<b>60 - 64</b>	340	91	94	131
<b>&gt;64</b>	164	19	15	156
<b>Revision Stage</b>	3	3	1	0





STATE



AGE GROUP


## MYFUTUREJOBS : REGISTRATION OF JOBSEEKERS



INDICATOR	2021	2022	2023	AS OF 4 OCT 2024
PAHANG	39,888	22,108	23,387	16,726
 EDUCATION				
Primary	467	287	293	328
PMR/PT3	917	370	625	392
SPM (O-Level)	15,294	4,120	4,801	3,736
STPM (A-Level)	773	460	410	433
Diploma	5,235	3,525	4,692	2,887
Bachelor	5,967	3,966	4,504	2,800
Master	356	194	193	104
PhD	36	25	14	9
Revision Stage	10,843	9,161	7,855	6,037
 OKU				
Total	103	73	208	310
Hearing impairment	10	0	17	33
Learning disability	18	15	27	57
Mental disability	19	14	34	16
Multiple disability	1	0	10	8
Physical disability	48	37	100	155
Speech impairment	1	1	4	7
Visual impairment	6	6	16	34

# QUICK FACTS

## MYFUTUREJOBS : PLACEMENT

INDICATOR	2021	2022	2023	AS OF 20 SEP 2024
<b>PAHANG</b>	<b>7,942</b>	<b>6,524</b>	<b>5,739</b>	<b>5,134</b>
 <b>STATE</b>				
Johor	39,725	33,037	19,853	15,026
Kedah	11,963	11,416	8,896	7,655
Kelantan	5,336	17,834	3,439	3,187
Melaka	9,084	8,104	6,314	4,963
Negeri Sembilan	9,095	7,226	6,834	4,930
Pahang	7,942	6,524	5,739	5,134
Perak	17,437	15,917	9,108	7,376
Perlis	1,126	1,047	910	869
Pulau Pinang	29,385	21,588	18,028	11,706
Sabah	6,977	19,297	11,957	7,448
Sarawak	13,336	15,443	11,568	7,719
Selangor	80,122	57,128	54,846	31,244
Terengganu	8,414	5,427	4,366	3,270
WP Kuala Lumpur	64,750	67,439	37,832	19,200
WP Labuan	452	687	598	340
WP Putrajaya	15,720	5,930	987	2,538
Revision Stage	0	0	13,639	8,999
<b>GENDER</b>				
Male	4,508	4,039	3,131	3,029
Female	3,434	2,485	2,608	2,105
<b>OKU</b>				
Total Disabled Person	67	104	75	94
<b>AGE GROUP</b>				
<15	0	0	0	1
15 - 19	717	355	191	150
20 - 24	2,370	1,780	1,895	2,055
25 - 29	1,556	1,651	1,706	941
30 - 34	898	932	738	445
35 - 39	695	588	451	616
40 - 44	572	427	275	362
45 - 49	411	286	184	244
50 - 54	321	268	170	143
55 - 59	228	203	88	75
60 - 64	116	19	41	64
>64	58	15	0	36
Revision Stage	0	0	0	2
<b>EDUCATION</b>				
Primary	209	155	212	202
PMR/PT3	294	255	142	199
SPM (O-Level)	4,214	2,951	2,018	1,905
STPM (A-Level)	178	159	115	157
Diploma	1,387	1,406	1,154	1,085
Bachelor	792	1,078	908	804
Master	43	59	46	50
PhD	6	6	3	3
Revision Stage	819	455	1,141	729

## MYFUTUREJOBS : PLACEMENT

## INDICATOR

2021

2022

2023

AS OF  
20 SEP 2024

PAHANG

7,942

6,524

5,739

5,134

SALARY  
RANGE

	2021	2022	2023	AS OF 20 SEP 2024
<RM1,500	2,192	1,050	839	415
RM1,500-RM1,999	3,728	1,897	3,157	1,980
RM2,000-RM2,999	854	623	1,057	1,463
RM3,000-RM3,999	352	268	275	297
RM4,000-RM4,999	180	291	90	100
RM5,000-RM5,999	80	43	63	120
RM6,000-RM7,999	98	14	8	9
RM8,000-RM9,999	73	1	6	3
RM10,000-RM12,999	11	7	4	2
RM13,000-RM15,999	4	2	0	1
>RM15,999	5	3	3	5
Revision Stage	365	2,325	237	739



## OCCUPATION

Managers	386	119	224	201
Professionals	1,011	500	743	668
Technicians	1,117	788	879	549
Clerical Support Workers	856	561	553	762
Service and Sales	1,378	1,444	1,233	548
Skilled Agriculture	46	25	21	17
Craft and related Trades Workers	398	94	286	309
Plant and Machine Operators	515	630	439	653
Elementary Occupations	1,733	395	869	480
Revision Stage	502	1,968	492	947



## INDUSTRY

Agriculture, Forestry And Fishing	344	98	139	113
Mining & Quarrying	137	29	46	57
Manufacturing	1,217	1,669	1,021	1,273
Electricity, Gas, Steam	87	27	41	33
Water Supply, Sewerage & Waste	32	18	20	18
Construction	713	275	478	358
Wholesale And Retail	664	802	752	549
Transportation	699	735	178	87
Accommodation And F&B	1,275	467	796	494
ICT	76	52	77	49
Financial And Insurance/Takaful	70	79	56	59
Real Estate	113	41	15	27
Professional & Technical	335	367	178	153
Administrative And Support Service	147	121	139	110
Defence Compulsory Social Security	157	179	324	721
Education	332	61	133	96
Human Health And Social Work	211	112	148	96
Arts, Entertainment And Recreation	39	34	84	35
Other Service Activities	772	566	834	396
Activities Of Households	37	37	26	13
Activities Of Extraterritorial	12	4	17	8
Revision Stage	473	751	237	389



# QUICK FACTS

## LOSS OF EMPLOYMENT

INDICATOR	2021	2022	2023	AS OF 4 OCT 2024
<b>PAHANG</b>	<b>861</b>	<b>659</b>	<b>1,066</b>	<b>717</b>
Johor	5,145	3,199	5,099	3,472
Kedah	2,932	1,189	1,750	2,029
Kelantan	374	666	560	500
Melaka	987	543	1,806	770
Negeri Sembilan	1,079	632	1,432	935
Pahang	861	659	1,066	717
Perak	2,675	1,664	1,647	1,488
Perlis	146	40	140	195
Pulau Pinang	3,529	2,112	5,844	7,827
Sabah	2,934	1,299	1,420	791
Sarawak	1,982	1,065	2,410	2,307
Selangor	21,198	10,546	14,763	11,601
Terengganu	704	817	502	536
WP Kuala Lumpur	16,488	9,766	11,116	9,265
WP Labuan	220	110	123	94
WP Putrajaya	106	75	304	84
Revision Stage	0	6	0	17
<b>GENDER</b>				
Male	475	411	636	457
Female	386	248	430	260
<b>EDUCATION</b>				
Primary	44	46	61	61
PMR/PT3	94	62	98	69
SPM (O-Level)	373	323	472	327
STPM (A-Level)	18	11	29	12
Diploma	175	136	255	170
Bachelor	115	63	142	73
Master	12	3	9	5
Revision Stage	30	15	0	0
<b>SALARY RANGE</b>				
<RM1,500	345	218	153	79
RM1,500-RM1,999	125	134	337	245
RM2,000-RM2,999	144	170	319	181
RM3,000-RM3,999	94	61	117	63
RM4,000-RM4,999	52	24	53	47
RM5,000-RM5,999	23	13	37	24
RM6,000-RM7,999	18	7	20	16
RM8,000-RM9,999	21	9	6	7
RM10,000-RM12,999	13	4	11	7
RM13,000-RM15,999	2	3	1	3
>RM15,999	9	9	2	0
Revision Stage	15	7	10	45

## LOSS OF EMPLOYMENT

INDICATOR	2021	2022	2023	AS OF 4 OCT 2024
<b>PAHANG</b>	<b>861</b>	<b>659</b>	<b>1,066</b>	<b>717</b>
<b>OCCUPATION</b>				
Managers	72	36	87	37
Professionals	145	60	204	113
Technicians	154	110	163	147
Clerical Support Workers	143	100	137	107
Service and Sales	57	37	66	46
Skilled Agriculture	1	2	2	1
Craft & Related Trades Workers	23	7	30	21
Plant and Machine Operators	150	197	227	116
Elementary Occupations	116	110	147	127
Revision Stage	0	0	3	2
<b>INDUSTRY</b>				
Agriculture, Forestry And Fishing	15	11	90	85
Mining And Quarrying	14	11	52	4
Manufacturing	236	313	328	260
Electricity, Gas, Steam	4	2	1	2
Water Supply, Sewerage & Waste	10	1	0	2
Construction	80	39	49	79
Wholesale & Retail	191	133	280	131
Transportation	25	18	38	20
Accommodation And F&B	94	28	22	22
ICT	9	1	18	1
Financial And Insurance/Takaful	15	6	10	9
Real Estate	14	5	4	4
Professional & Technical	45	11	23	15
Administrative And Support Service	15	21	9	18
Defence Compulsory Social Security	0	9	66	24
Education	37	6	9	8
Human Health And Social Work	17	5	4	16
Arts, Entertainment And Recreation	4	2	5	0
Other Service Activities	36	34	57	15
Activities Of Households	0	3	0	0
Activities Of Extraterritorial	0	0	1	1
Revision Stage	0	0	0	1
<b>REASON FOR LOSS OF EMPLOYMENT</b>				
Closure of Business / Division	238	227	415	283
Downsizing	124	171	184	130
Financial Difficulties	117	54	88	58
Performance-Based Dismissal	137	54	85	54
Voluntary Resignation	72	55	71	40
VSS / MSS / Early Retirement Package	57	39	81	81
Other Reasons	116	59	142	71