



MINISTRY OF HUMAN RESOURCES



PERKESO



# SELANGOR QUICK FACTS

EMPLOYMENT INSURANCE SYSTEM

AS OF 6 DECEMBER 2024





# QUICK FACTS



## EMPLOYMENT INSURANCE SYSTEM QUICK FACTS AS OF 6 DECEMBER 2024

	2021	2022	2023	2024	TOTAL
Vacancy	739,038	1,462,665	577,246	323,271	3,102,220
Active Vacancies				31,139	
Jobseeker	213,149	122,107	108,404	67,929	511,589
Placement	80,122	57,128	54,846	41,694	233,790
Loss of Employment	21,198	10,546	14,763	13,966	60,473

## PERKESO'S ACTIVE CONTRIBUTORS SEPTEMBER 2024

Active Employees  
(ACT 4)

2,388,054

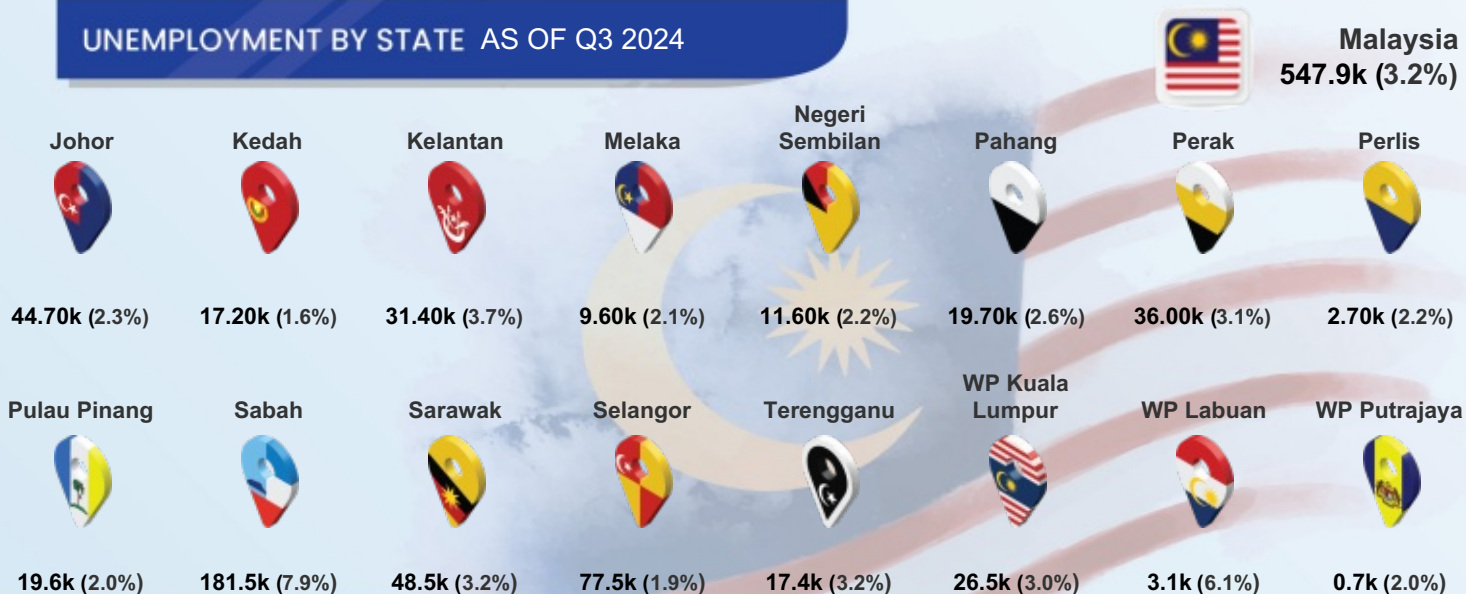
Self Employment  
(ACT 789)

97,146

Active Employees  
(ACT 800)

1,688,115

## UNEMPLOYMENT BY STATE AS OF Q3 2024



Notes: (%) show unemployment rates

# QUICK FACTS



## MYFUTUREJOBS : VACANCIES

INDICATOR	2021	2022	2023	AS OF 6 DEC 2024
<b>SELANGOR</b>	<b>739,038</b>	<b>1,462,665</b>	<b>577,246</b>	<b>323,271</b>
<b>Johor</b>	242,847	820,368	191,623	136,689
<b>Kedah</b>	61,802	134,183	47,744	31,787
<b>Kelantan</b>	53,821	48,311	22,108	14,824
<b>Melaka</b>	62,228	156,513	45,209	39,163
<b>Negeri Sembilan</b>	86,720	181,371	62,360	35,262
<b>Pahang</b>	70,978	148,733	65,222	30,506
<b>Perak</b>	129,613	193,404	68,196	46,872
<b>Perlis</b>	10,429	5,867	4,889	4,196
<b>Pulau Pinang</b>	209,659	421,388	148,163	96,113
<b>Sabah</b>	74,450	98,434	104,003	108,042
<b>Sarawak</b>	266,591	242,245	240,529	296,207
<b>Selangor</b>	739,038	1,462,665	577,246	323,271
<b>Terengganu</b>	41,192	41,250	19,778	17,413
<b>WP Kuala Lumpur</b>	406,719	782,680	397,306	242,231
<b>WP Labuan</b>	7,511	856	832	1,758
<b>WP Putrajaya</b>	16,979	15,150	7,712	10,560
<b>STATE</b>				
<b>Primary</b>	46,263	308,840	75,553	13,468
<b>PMR/PT3</b>	89,220	272,382	48,812	23,108
<b>SPM (O-Level)</b>	372,195	658,422	303,712	147,898
<b>STPM (A-Level)</b>	9,019	10,494	3,387	3,138
<b>Diploma</b>	133,802	133,499	83,314	77,040
<b>Bachelor</b>	85,976	76,297	59,559	56,365
<b>Master</b>	1,833	1,676	1,547	1,313
<b>PhD</b>	730	1,055	1,355	941
<b>Revision Stage</b>	0	0	7	0
<b>EDUCATION</b>				
<b>&lt;RM1,500</b>	257,648	441,139	96,408	19,462
<b>RM1,500-RM1,999</b>	193,334	688,183	280,528	96,126
<b>RM2,000-RM2,999</b>	127,690	175,655	110,939	125,877
<b>RM3,000-RM3,999</b>	46,286	43,542	38,002	30,987
<b>RM4,000-RM4,999</b>	9,964	10,207	12,203	12,856
<b>RM5,000-RM5,999</b>	9,195	13,120	14,111	14,221
<b>RM6,000-RM7,999</b>	11,221	14,125	8,802	7,871
<b>RM8,000-RM9,999</b>	7,385	6,959	8,517	7,473
<b>RM10,000-RM12,999</b>	5,444	4,978	3,687	6,869
<b>RM13,000-RM15,999</b>	2,111	1,485	1,404	1,097
<b>&gt;RM15,999</b>	859	1,554	2,587	432
<b>Revision Stage</b>	67,901	61,718	58	0
<b>SALARY RANGE</b>				



## MYFUTUREJOBS : VACANCIES

INDICATOR	2021	2022	2023	AS OF 6 DEC 2024
<b>SELANGOR</b>	<b>739,038</b>	<b>1,462,665</b>	<b>577,246</b>	<b>323,271</b>
<b>OCCUPATION</b>				
Managers	31,620	84,778	36,058	18,168
Professionals	147,618	104,931	87,408	68,087
Technicians	104,877	106,320	131,835	79,298
Clerical Support Workers	59,992	79,858	39,158	41,282
Service & Sales	133,856	158,447	81,757	40,236
Skilled Agriculture	609	6,333	2,916	1,800
Craft & Related Trades Workers	68,819	122,755	23,044	15,730
Plant & Machine Operators	52,340	90,122	25,989	19,219
Elementary Occupations	139,307	709,121	149,081	39,451
<b>INDUSTRY</b>				
Agriculture, Forestry And Fishing	1,344	16,390	6,042	2,126
Mining And Quarrying	1,576	3,287	11,650	702
Manufacturing	171,136	466,751	80,631	53,895
Electricity, Gas, Steam	9,470	3,192	3,746	1,817
Water Supply; Sewerage & Waste	1,896	8,255	2,926	760
Construction	30,367	252,752	54,802	13,550
Wholesale And Retail	98,413	131,812	62,194	31,261
Transportation	46,557	60,637	33,480	25,495
Accommodation And F&B	89,267	171,416	49,870	21,848
ICT	46,707	31,984	36,779	29,589
Financial And Insurance/Takaful	13,364	10,071	75,221	8,325
Real Estate	4,884	4,323	2,395	1,978
Professional & Technical	57,416	58,306	33,715	25,634
Administrative And Support Service	79,904	141,892	58,544	29,883
Defence Compulsory Social Security	1,108	3,143	4,949	3,645
Education	36,496	21,990	14,870	12,320
Human Health And Social Work	13,108	23,411	26,957	52,165
Arts, Entertainment And Recreation	7,700	3,869	5,142	3,236
Other Service Activities	24,560	41,855	12,130	4,532
Activities Of Households	3,744	7,324	1,200	414
Activities Of Extraterritorial	21	5	3	96



# QUICK FACTS



## MYFUTUREJOBS : REGISTRATION OF JOBSEEKERS

### INDICATOR

2021

2022

2023

AS OF  
6 DEC 2024

SELANGOR

213,149

122,107

108,404

67,929



### STATE

	2021	2022	2023	AS OF 6 DEC 2024
Johor	105,481	60,832	52,959	40,606
Kedah	53,915	35,935	40,614	34,212
Kelantan	42,694	27,388	29,762	24,268
Melaka	29,338	21,191	18,429	14,077
Negeri Sembilan	38,557	23,494	23,864	16,776
Pahang	39,888	22,108	23,387	20,332
Perak	64,725	39,974	38,861	32,903
Perlis	6,163	4,297	4,545	3,848
Pulau Pinang	48,890	29,004	30,836	22,647
Sabah	70,738	48,510	47,961	41,286
Sarawak	54,536	41,956	42,530	32,196
Selangor	213,149	122,107	108,404	67,929
Terengganu	32,857	20,067	20,181	18,094
WP Kuala Lumpur	81,668	45,279	38,977	24,339
WP Labuan	2,062	1,779	1,738	1,411
WP Putrajaya	2,859	2,051	2,994	1,774
Revision Stage	457	353	399	371

### GENDER

	2021	2022	2023	AS OF 6 DEC 2024
Male	102,306	58,669	52,177	34,243
Female	110,843	63,438	56,227	33,686



### AGE GROUP

	2021	2022	2023	AS OF 6 DEC 2024
<15	20	18	23	18
15 - 19	416	2,612	3,642	5,056
20 - 24	44,297	31,701	32,764	23,592
25 - 29	69,349	36,351	29,900	12,126
30 - 34	36,359	21,480	17,088	8,098
35 - 39	21,668	12,450	10,470	5,814
40 - 44	14,739	7,044	6,098	4,220
45 - 49	10,185	4,533	3,846	3,208
50 - 54	7,299	2,999	2,439	2,378
55 - 59	5,131	1,831	1,338	1,505
60 - 64	2,608	777	596	883
>64	1,059	299	197	1,029
Revision Stage	19	12	3	2

## MYFUTUREJOBS : REGISTRATION OF JOBSEEKERS



# QUICK FACTS

INDICATOR	2021	2022	2023	AS OF 6 DEC 2024
SELANGOR	213,149	122,107	108,404	67,929
<b>EDUCATION</b>				
Primary	1,555	732	752	1,120
PMR/PT3	4,089	1,437	1,332	1,373
SPM (O-Level)	60,584	19,986	20,795	13,531
STPM (A-Level)	4,156	2,010	1,658	1,316
Diploma	36,380	20,611	20,019	12,950
Bachelor	49,490	30,221	26,096	15,864
Master	5,493	3,046	2,454	1,527
PhD	552	398	274	196
Revision Stage	50,850	43,666	35,024	20,052
<b>OKU</b>				
Total	185	206	785	1,068
Hearing impairment	29	15	60	93
Learning disability	20	19	117	143
Mental disability	27	20	78	81
Multiple disability	7	9	44	48
Physical disability	95	133	408	586
Speech impairment	1	2	23	11
Visual impairment	6	8	55	106

# QUICK FACTS



## MYFUTUREJOBS : PLACEMENT

INDICATOR	2021	2022	2023	AS OF 29 NOV 2024
<b>SELANGOR</b>	<b>80,122</b>	<b>57,128</b>	<b>54,846</b>	<b>41,694</b>
<b>STATE</b>				
Johor	39,725	33,037	19,853	21,201
Kedah	11,963	11,416	8,896	9,173
Kelantan	5,336	17,834	3,439	3,980
Melaka	9,084	8,104	6,314	6,072
Negeri Sembilan	9,095	7,226	6,834	6,162
Pahang	7,942	6,524	5,739	7,783
Perak	17,437	15,917	9,108	11,115
Perlis	1,126	1,047	910	1,090
Pulau Pinang	29,385	21,588	18,028	15,441
Sabah	6,977	19,297	11,957	10,873
Sarawak	13,336	15,443	11,568	12,738
Selangor	80,122	57,128	54,846	41,694
Terengganu	8,414	5,427	4,366	4,475
WP Kuala Lumpur	64,750	67,439	37,832	25,986
WP Labuan	452	687	598	497
WP Putrajaya	15,720	5,930	987	2,717
Revision Stage	0	0	13,639	13,442
<b>GENDER</b>				
Male	44,757	30,144	28,778	22,723
Female	35,365	26,984	26,068	18,971
<b>OKU</b>				
Total Disabled Person	236	483	413	538
<b>AGE GROUP</b>				
<15	2	0	0	0
15 - 19	7,826	3,915	1,371	922
20 - 24	25,392	13,752	16,723	13,438
25 - 29	17,003	11,439	18,047	6,674
30 - 34	8,910	7,733	7,853	3,786
35 - 39	6,727	6,201	4,340	6,409
40 - 44	5,388	5,003	2,734	4,126
45 - 49	3,705	3,954	1,923	2,739
50 - 54	2,542	2,957	1,114	1,595
55 - 59	1,589	1,765	482	658
60 - 64	711	305	259	658
>64	327	104	0	689
<b>EDUCATION</b>				
Primary	925	690	588	792
PMR/PT3	2,278	1,524	1,292	1,011
SPM (O-Level)	30,100	16,533	15,947	13,044
STPM (A-Level)	2,042	1,246	1,122	829
Diploma	14,133	11,572	10,099	8,953
Bachelor	12,915	11,351	13,175	9,470
Master	1,152	1,141	1,055	1,070
PhD	93	66	97	133
Revision Stage	16,484	13,005	11,471	6,392



## MYFUTUREJOBS : PLACEMENT

### INDICATOR

2021

2022

2023

AS OF  
29 NOV 2024

SELANGOR

80,122

57,128

54,846

41,694



### SALARY RANGE

	2021	2022	2023	AS OF 29 NOV 2024
<RM1,500	13,556	5,468	9,016	3,083
RM1,500-RM1,999	30,007	15,115	15,690	11,105
RM2,000-RM2,999	16,540	9,616	16,161	8,157
RM3,000-RM3,999	7,837	4,775	6,835	5,880
RM4,000-RM4,999	3,000	6,455	2,983	3,230
RM5,000-RM5,999	1,917	1,337	2,845	4,569
RM6,000-RM7,999	1,781	513	214	424
RM8,000-RM9,999	1,030	271	129	225
RM10,000-RM12,999	773	223	96	161
RM13,000-RM15,999	197	40	33	112
>RM15,999	247	52	62	168
Revision Stage	3,237	13,263	782	4,580



### OCCUPATION

Managers	7,060	2,183	3,550	4,237
Professionals	17,808	5,223	12,288	8,651
Technicians	12,797	9,935	10,223	5,384
Clerical Support Workers	7,302	1,638	3,922	5,033
Service and Sales	13,124	14,563	7,782	4,759
Skilled Agriculture	633	85	675	19
Craft and related Trades Workers	2,026	533	2,449	1,144
Plant and Machine Operators	6,735	3,540	3,286	2,948
Elementary Occupations	7,970	1,558	6,504	3,267
Revision Stage	4,667	17,870	4,167	6,252



### INDUSTRY

Agriculture, Forestry And Fishing	291	197	205	166
Mining & Quarrying	149	122	144	111
Manufacturing	13,525	10,798	9,822	7,659
Electricity, Gas, Steam	716	220	351	266
Water Supply, Sewerage & Waste	501	206	252	133
Construction	3,259	1,553	2,498	2,135
Wholesale And Retail	7,151	5,938	9,067	6,530
Transportation	5,445	3,466	3,078	4,246
Accommodation And F&B	8,494	6,215	4,072	2,596
ICT	5,336	3,979	1,891	1,614
Financial And Insurance/Takaful	1,296	760	675	749
Real Estate	1,340	280	403	444
Professional & Technical	3,202	2,873	4,774	2,776
Administrative And Support Service	3,609	2,415	1,971	1,620
Defence Compulsory Social Security	1,683	3,312	4,111	2,908
Education	4,314	1,239	1,586	1,195
Human Health And Social Work	1,671	703	1,345	1,052
Arts, Entertainment And Recreation	1,180	354	264	163
Other Service Activities	12,882	6,198	6,961	3,267
Activities Of Households	475	277	160	81
Activities Of Extraterritorial	129	131	94	38
Revision Stage	3,474	5,892	1,122	1,945



# QUICK FACTS



## LOSS OF EMPLOYMENT

INDICATOR	2021	2022	2023	AS OF 6 DEC 2024
<b>SELANGOR</b>	<b>21,198</b>	<b>10,546</b>	<b>14,763</b>	<b>13,966</b>
<b>Johor</b>	5,145	3,199	5,099	4,337
<b>Kedah</b>	2,932	1,189	1,750	2,567
<b>Kelantan</b>	374	666	560	623
<b>Melaka</b>	987	543	1,806	1,561
<b>Negeri Sembilan</b>	1,079	632	1,432	1,231
<b>Pahang</b>	861	659	1,066	1,060
<b>Perak</b>	2,675	1,664	1,647	1,845
<b>Perlis</b>	146	40	140	208
<b>Pulau Pinang</b>	3,529	2,112	5,844	9,877
<b>Sabah</b>	2,934	1,299	1,420	1,278
<b>Sarawak</b>	1,982	1,065	2,410	3,414
<b>Selangor</b>	21,198	10,546	14,763	13,966
<b>Terengganu</b>	704	817	502	613
<b>WP Kuala Lumpur</b>	16,488	9,766	11,116	11,659
<b>WP Labuan</b>	220	110	123	125
<b>WP Putrajaya</b>	106	75	304	122
<b>Revision Stage</b>	0	6	0	21
<b>STATE</b>				
<b>Male</b>	12,006	6,459	9,094	8,795
<b>Female</b>	9,192	4,087	5,669	5,171
<b>GENDER</b>				
<b>Primary</b>	469	239	812	723
<b>PMR/PT3</b>	1,208	556	762	806
<b>SPM (O-Level)</b>	6,786	3,938	5,078	5,092
<b>STPM (A-Level)</b>	558	222	334	233
<b>Diploma</b>	5,628	2,584	3,701	3,205
<b>Bachelor</b>	5,139	2,303	3,578	3,382
<b>Master</b>	686	328	463	481
<b>PhD</b>	58	24	35	44
<b>Revision Stage</b>	666	352	0	0
<b>EDUCATION</b>				
<b>&lt;RM1,500</b>	2,635	1,379	802	595
<b>RM1,500-RM1,999</b>	2,478	1,437	2,205	1,657
<b>RM2,000-RM2,999</b>	4,872	2,441	3,575	3,353
<b>RM3,000-RM3,999</b>	4,292	1,988	2,520	2,498
<b>RM4,000-RM4,999</b>	2,179	966	1,602	1,784
<b>RM5,000-RM5,999</b>	1,249	579	950	1,127
<b>RM6,000-RM7,999</b>	1,296	645	1,113	1,130
<b>RM8,000-RM9,999</b>	750	320	585	536
<b>RM10,000-RM12,999</b>	485	247	474	416
<b>RM13,000-RM15,999</b>	274	120	241	239
<b>&gt;RM15,999</b>	396	223	469	404
<b>Revision Stage</b>	292	201	227	227
<b>SALARY RANGE</b>				



## LOSS OF EMPLOYMENT

INDICATOR	2021	2022	2023	AS OF 6 DEC 2024
<b>SELANGOR</b>	<b>21,198</b>	<b>10,546</b>	<b>14,763</b>	<b>13,966</b>
<b>OCCUPATION</b>				
Managers	3,759	1,805	2,631	2,197
Professionals	6,807	3,032	4,545	3,569
Technicians	4,084	2,002	2,365	2,091
Clerical Support Workers	1,483	729	840	738
Service and Sales	1,241	430	934	661
Skilled Agriculture	6	0	3	1
Craft & Related Trades Workers	350	178	414	206
Plant and Machine Operators	2,419	1,460	1,922	2,137
Elementary Occupations	940	853	1,017	2,218
Revision Stage	109	57	92	148
<b>INDUSTRY</b>				
Agriculture, Forestry And Fishing	82	59	104	35
Mining And Quarrying	114	73	45	11
Manufacturing	4,784	2,594	3,287	3,286
Electricity, Gas, Steam	124	80	34	49
Water Supply, Sewerage & Waste	47	17	43	58
Construction	1,729	763	1,257	1,025
Wholesale & Retail	3,781	1,664	2,429	2,862
Transportation	1,524	1,287	2,232	1,243
Accommodation And F&B	1,058	229	285	507
ICT	2,267	719	886	1,423
Financial And Insurance/Takaful	278	113	151	395
Real Estate	424	153	114	271
Professional & Technical	2,055	1,178	991	1,188
Administrative And Support Service	1,285	515	787	843
Defence Compulsory Social Security	13	118	479	91
Education	705	185	155	165
Human Health And Social Work	205	153	166	203
Arts, Entertainment And Recreation	111	36	53	31
Other Service Activities	600	594	1,233	273
Activities Of Households	2	12	19	4
Activities Of Extraterritorial	10	4	13	0
Revision Stage	0	0	0	3
<b>REASON FOR LOSS OF EMPLOYMENT</b>				
Closure of Business / Division	3,598	2,606	3,314	3,306
Downsizing	4,273	1,818	3,472	3,325
Financial Difficulties	1,884	701	1,168	746
Performance-Based Dismissal	2,535	1,084	1,526	1,383
Voluntary Resignation	2,065	1,384	1,185	1,080
VSS / MSS / Early Retirement Package	4,260	1,902	2,003	2,558
Other Reasons	2,583	1,051	2,095	1,568